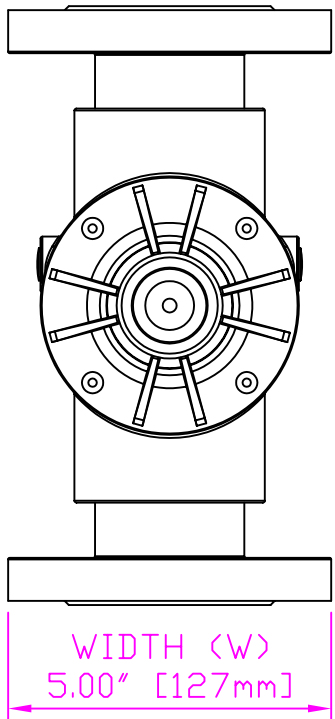
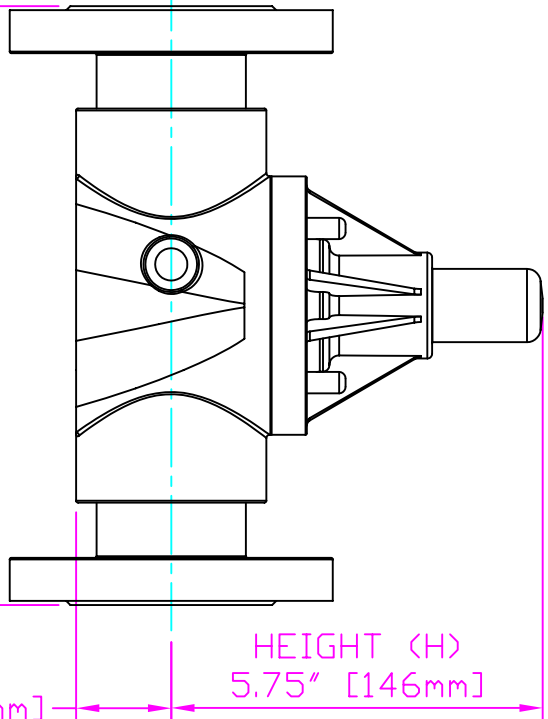


THIS DRAWING IS THE PROPERTY OF PRIMARY FLUID SYSTEMS INC. FROM WHICH A WRITTEN CONSENT FOR APPROVAL SHALL BE REQUIRED PRIOR TO COPYING.



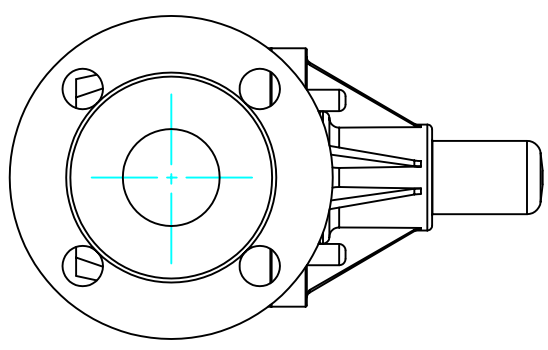
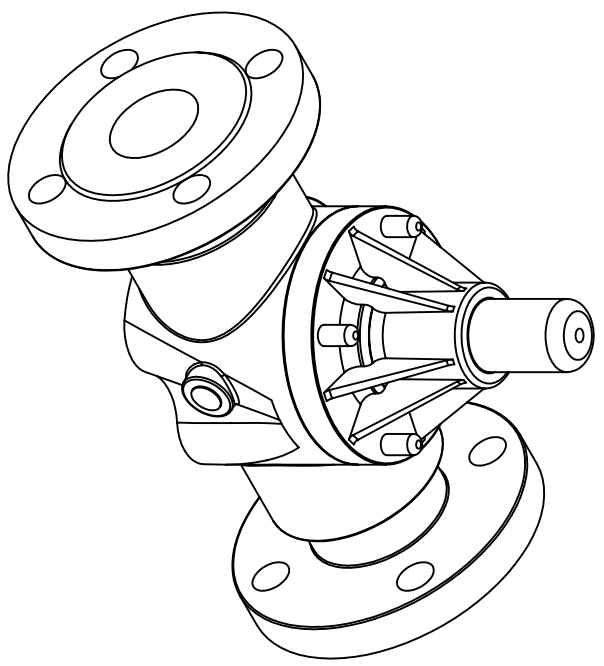
WIDTH (W)  
5.00" [127mm]



HEIGHT (H)  
5.75" [146mm]

9.27" [235mm]  
LENGTH (L)

1.47" [37mm]  
HEIGHT (h)



- THIS DRAWING WITH DIMENSIONS  
APPLY TO FOLLOWING MODELS:
- ECC-150E-PVC-P
  - ECC-150E-CPVC-T
  - ECC-150E-PP-T
  - ECC-150E-PVDF-T
  - ECC-150F-PVC-P
  - ECC-150F-CPVC-T
  - ECC-150F-PP-T
  - ECC-150F-PVDF-T

**PRIMARY FLUID SYSTEMS INC.**

1 1/2" (DN 40) FLANGED  
ECC VALVE

1050 Cooke Blvd, Burlington, Ontario L7T 4A8

PROJECT: C-SERIES ECC		SHT: 1 OF 1		DRAWN BY: VICTOR W.	
DATE ISSUED: 6-DEC-11		SCALE: 1:3		UNITS: INCHES	
ECC-150E-PVC-P-2D		MATERIAL: PLY		REV.#: 1	
APPROVED BY:		THIRD ANGLE PROJECTION		DIMENSIONAL TOLERANCE XXX = ± 0.25"	
PLANNAR VIEW, 2D		DVG TYPE:		SHEET SIZE: 8.5 X 11	

**A**