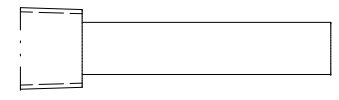
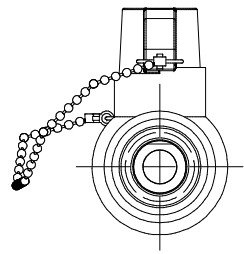
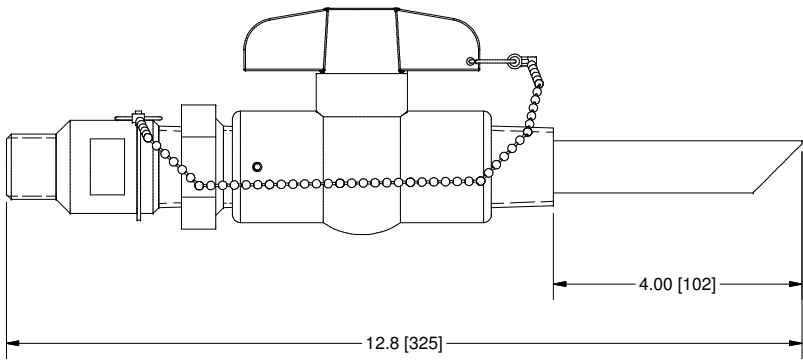
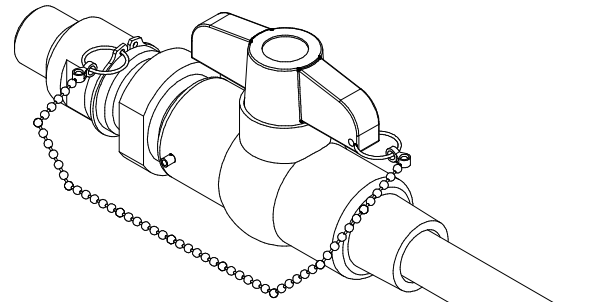
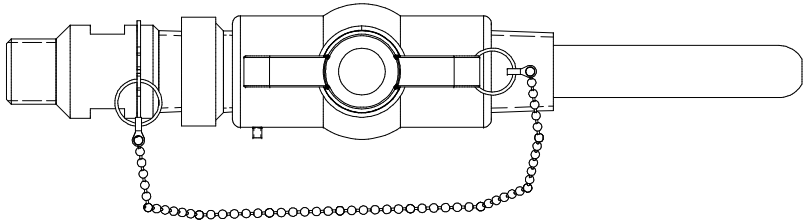


THIS DRAWING IS THE PROPERTY OF PRIMARY FLUID SYSTEMS INC. FROM WHICH A WRITTEN CONSENT FOR APPROVAL SHALL BE REQUIRED PRIOR TO COPYING.

NO.	NAME	DESCRIPTION
1	MAX ALLOWABLE OPERATING TEMPERATURE	140°F (60°C)
2	MAX ALLOWABLE OPERATING PRESSURE	150 PSIG
CONNECTIONS	3	INLET PORT CONNECTION
	4	OUTLET PORT CONNECTION
	5	TYPE
MATERIALS	8	BODY AND QUILL
	11	GLAND
	13	VALVE ASSEMBLY
	14	GLAND SEAL
		VITON (EPDM OPTIONAL)

CS CORPORATION STOPS



OPTION STINGER TIP (4IB)
SCALE 1:2

SCALE 1 : 2

REV	DESCRIPTION	DATE	NAME
1	NEW DRAWING	--	--

PRIMARY FLUID SYSTEMS INC. 1050 COOKE BLVD. BURLINGTON, ONTARIO L7T 4A8		PROJECT: CS	SHT: 1 OF 1	DRAWN BY: TJ
TITLE: 1" CORP STOP WITH 3/4" INLET AND 1" OUTLET NPT CONNECTIONS		DATE DRAWN: 4/5/2017	SCALE: 1 : 2	UNITS: INCH (mm)
DWG NAME: CORP STOP DWG TYPE: PLANAR VIEW		MATERIAL: SEE CHART	DWG NO: CS-75A10A-41A-AAA_R1	APPROVED BY: CHECKED BY:
REVISION HISTORY		DIMENSIONAL TOLERANCE 0.X ± 0.25" 0.XX ± 0.25" 0.XXX ± 0.25"		11 X 17 SHEET SIZE: B