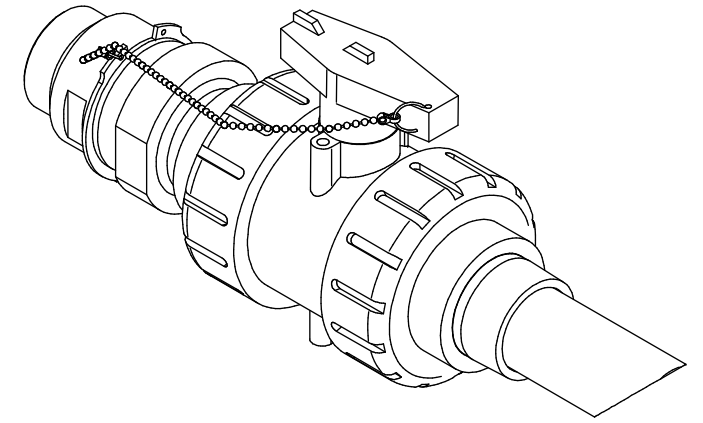
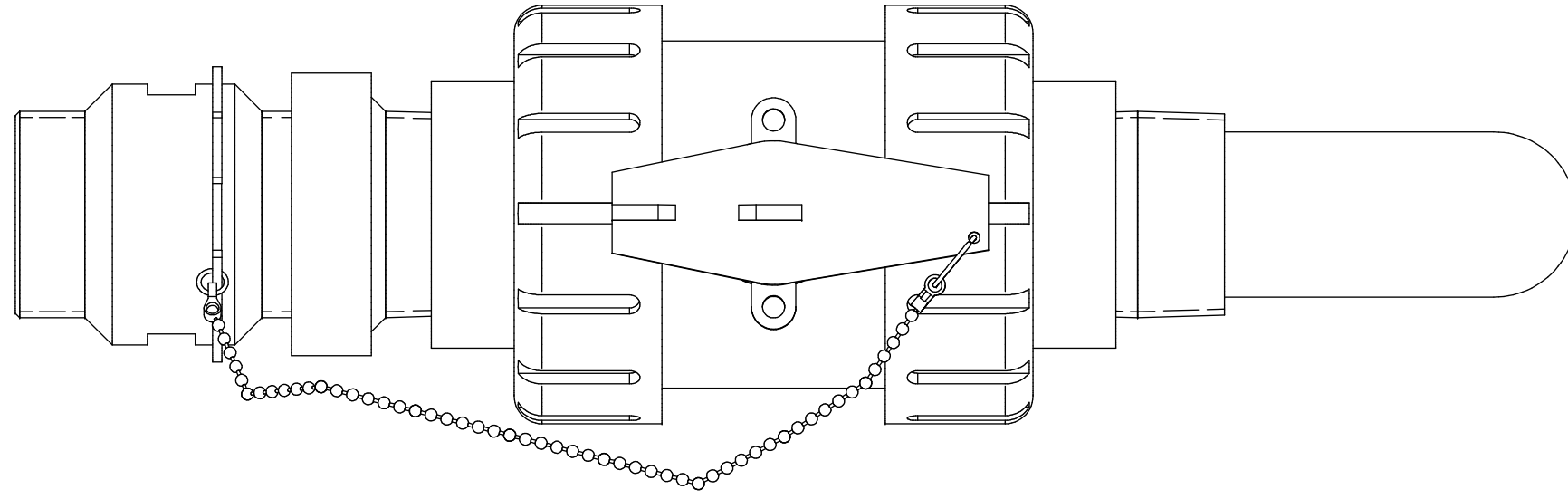


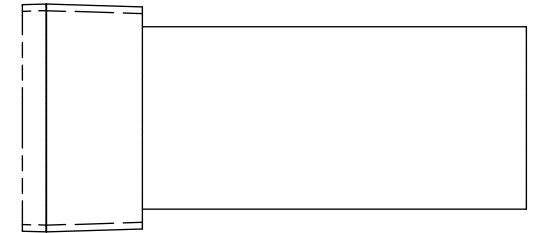
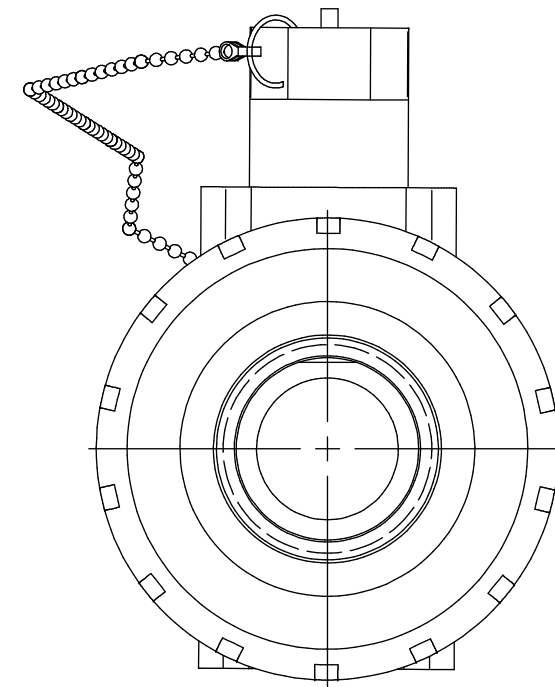
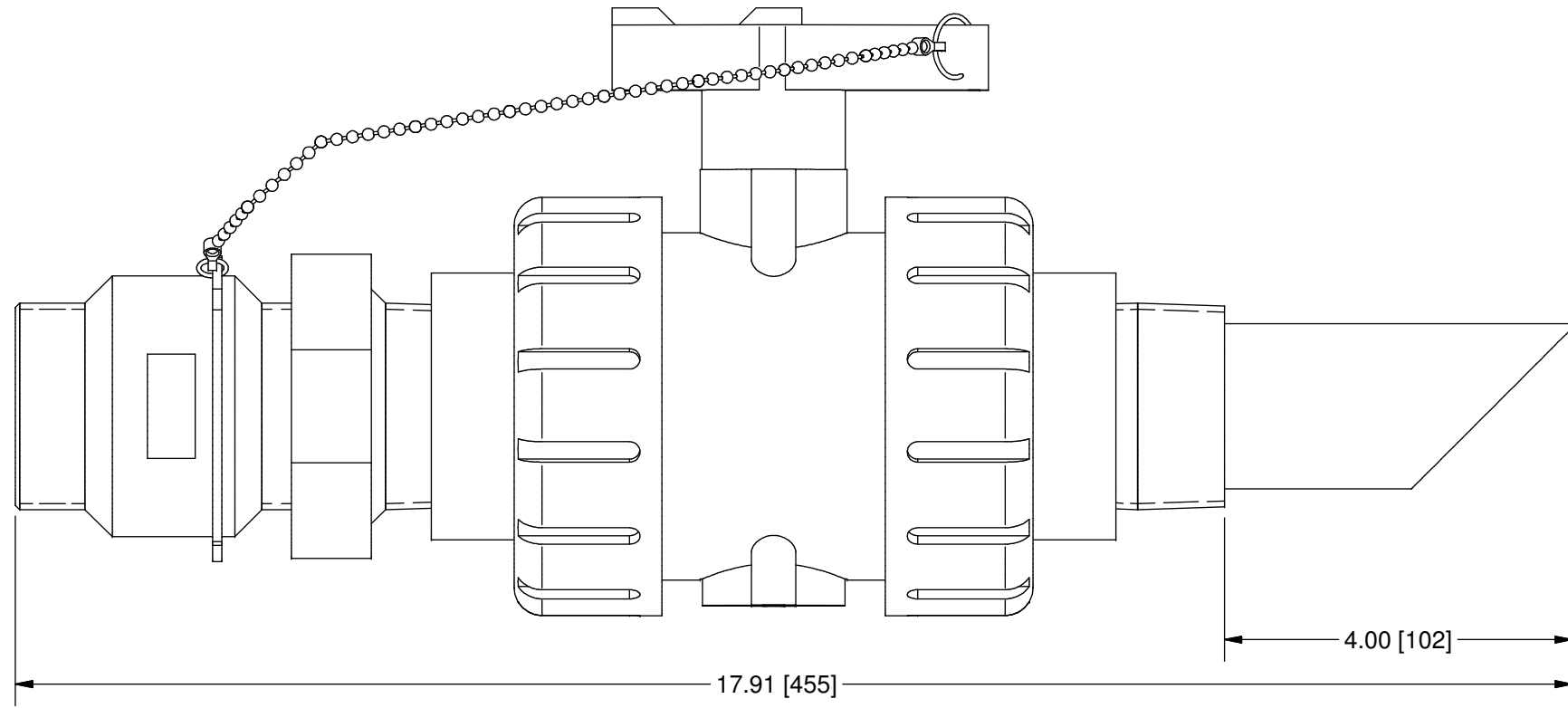
THIS DRAWING IS THE PROPERTY OF PRIMARY FLUID SYSTEMS INC. FROM WHICH A WRITTEN CONSENT FOR APPROVAL SHALL BE REQUIRED PRIOR TO COPYING.

| | NO. | NAME | DESCRIPTION |
|------------------|-----|-------------------------------------|-----------------------|
| CORPORATION STOP | 1 | MAX ALLOWABLE OPERATING TEMPERATURE | 210°F (98°C) |
| | 2 | MAX ALLOWABLE OPERATING PRESSURE | 150 PSIG @70°F (21°C) |
| CONNECTIONS | 3 | INLET PORT CONNECTION | 2" |
| | 4 | OUTLET PORT CONNECTION | 2" |
| | 5 | TYPE | NPT |
| MATERIALS | 6 | BODY AND QUILL | CPVC (CORZAN) |
| | 7 | GLAND | CPVC (CORZAN) |
| | 8 | GLAND SEAL | VITON (OPTIONAL EPDM) |
| | 9 | VALVE ASSEMBLY | CPVC (CORZAN) |

CS CORPORATION STOPS



SCALE 1 : 4



OPTION STINGER TIP (4IB)
SCALE 1 : 2

SCALE 1:2

| | | | | |
|---|--|-----------------------|---|------------------------|
| PRIMARY FLUID SYSTEMS INC. 1050 COOKE BLVD, BURLINGTON, ONTARIO L7T 4A8 | | PROJECT: CS | SHT: 1 OF 1 | DRAWN BY: BL |
| TITLE: CORP STOP WITH 2" INLET AND 2" OUTLET NPT CONNECTIONS | | DATE DRAWN: 8/28/2024 | SCALE: 1 : 2 | UNITS: INCH [mm] |
| DWG NO: CS-20A20A-4IA-BBBV_R0 | | MATERIAL: SEE CHART | DIMENSIONAL TOLERANCE 0.X = ± 0.25" 0.XX = ± 0.25" 0.XXX = ± 0.25" | REV# 0 |
| DWG NAME: APV DWG TYPE: PLANAR VIEW | | APPROVED BY: | CHECKED BY: | THIRD ANGLE PROJECTION |

| REV | DESCRIPTION | DATE | NAME |
|-----|-------------|------|------|
| 0 | NEW DRAWING | -- | -- |

REVISION HISTORY