

ECO Valve CDN Parts

Pricing Catalogue 2025

(Includes Recommended Spare Parts - Service Kits)

As Manufactured By:



PRIMARY FLUID Tel: (905) 333-8743
SYSTEMS INC. Fax: (905) 333-8746
North America Toll Free – 1-866-324-6422

E-Mail: sales@ecovalve.com
<http://www.eco-valve.com/>

INDEX

SERIES "A" EXPLODED VIEW – BACK PRESSURE / PRESSURE RELIEF VALVE	3
25 (1/4") – 38 (3/8") – 50 (1/2")	4
RECOMMENDED SPARE PARTS	9
SERVICE KIT	9
BODY CONFIGURATION	9
SERIES "B" EXPLODED VIEW – BACK PRESSURE / PRESSURE RELIEF VALVE	10
55 (1/2" HIGH FLOW) – 75 (3/4") – 100 (1")	11
RECOMMENDED SPARE PARTS	16
SERVICE KIT	16
BODY CONFIGURATION	16
EXPLODED VIEW – BACK PRESSURE / PRESSURE RELIEF VALVE	17
110 (1" HIGH FLOW) – 125 (1 1/4") – 150 (1 1/2") – 200 (2")	18
RECOMMENDED SPARE PARTS	24
SERVICE KIT	24
BODY CONFIGURATION	24

Series "A" Exploded View – Back Pressure / Pressure Relief Valve 1/4" (ECO-25), 3/8" (ECO-38), 1/2" (ECO-50) ECO Valves

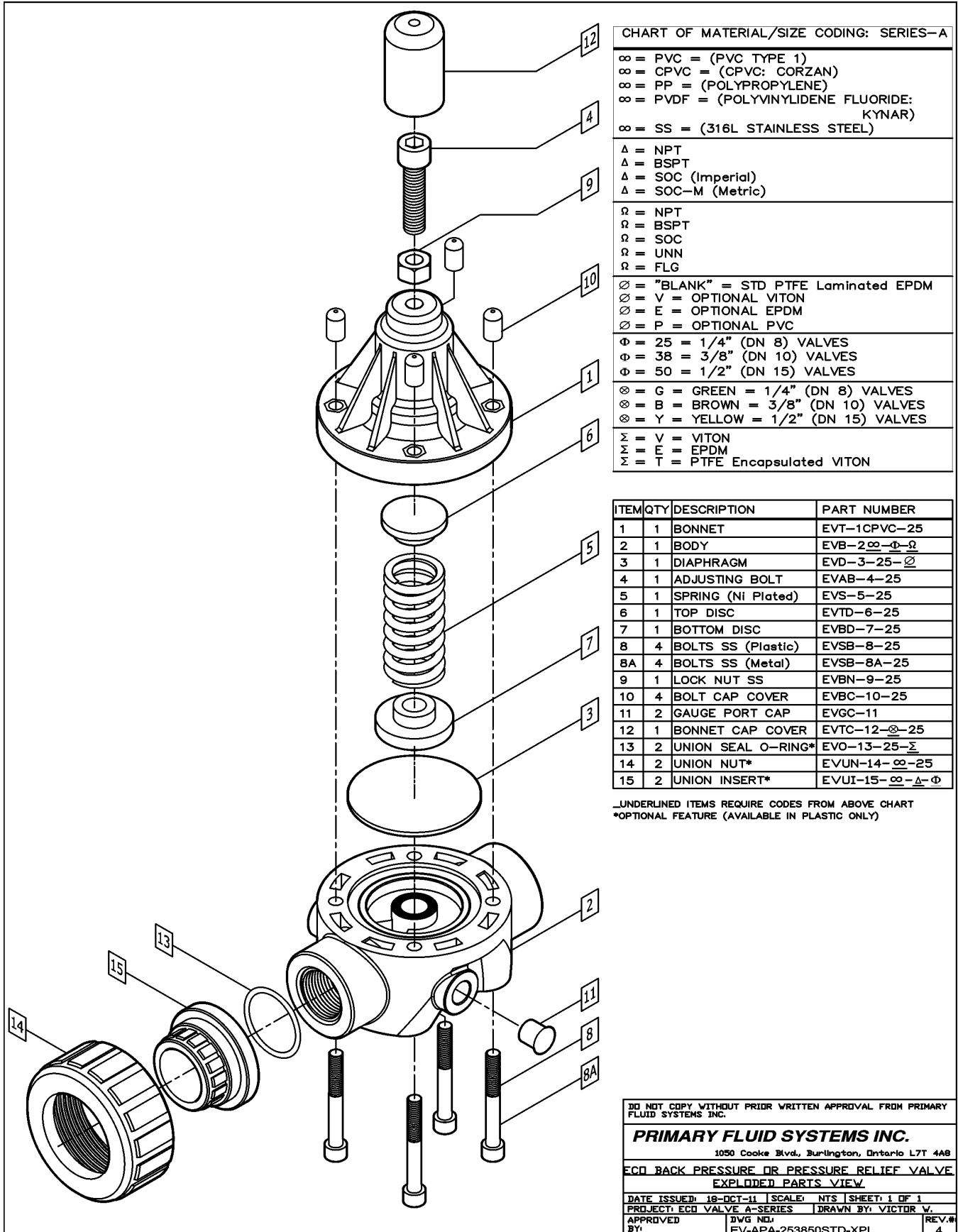


CHART OF MATERIAL/SIZE CODING: SERIES-A

∞ = PVC = (PVC TYPE 1)
∞ = CPVC = (CPVC: CORZAN)
∞ = PP = (POLYPROPYLENE)
∞ = PVDF = (POLYVINYLIDENE FLUORIDE: KYNAR)
∞ = SS = (316L STAINLESS STEEL)
Δ = NPT
Δ = BSPT
Δ = SOC (Imperial)
Δ = SOC-M (Metric)
Ω = NPT
Ω = BSPT
Ω = SOC
Ω = UNN
Ω = FLG
∅ = "BLANK" = STD PTFE Laminated EPDM
∅ = V = OPTIONAL VITON
∅ = E = OPTIONAL EPDM
∅ = P = OPTIONAL PVC
Φ = 25 = 1/4" (DN 8) VALVES
Φ = 38 = 3/8" (DN 10) VALVES
Φ = 50 = 1/2" (DN 15) VALVES
⊗ = G = GREEN = 1/4" (DN 8) VALVES
⊗ = B = BROWN = 3/8" (DN 10) VALVES
⊗ = Y = YELLOW = 1/2" (DN 15) VALVES
Σ = V = VITON
Σ = E = EPDM
Σ = T = PTFE Encapsulated VITON

ITEM	QTY	DESCRIPTION	PART NUMBER
1	1	BONNET	EVT-1CPVC-25
2	1	BODY	EVB-2∞-Φ-Ω
3	1	DIAPHRAGM	EVD-3-25-∅
4	1	ADJUSTING BOLT	EVAB-4-25
5	1	SPRING (Ni Plated)	EVS-5-25
6	1	TOP DISC	EVD-6-25
7	1	BOTTOM DISC	EVBD-7-25
8	4	BOLTS SS (Plastic)	EVSB-8-25
8A	4	BOLTS SS (Metal)	EVSB-8A-25
9	1	LOCK NUT SS	EVBN-9-25
10	4	BOLT CAP COVER	EVBC-10-25
11	2	GAUGE PORT CAP	EVGC-11
12	1	BONNET CAP COVER	EVTC-12-∅-25
13	2	UNION SEAL O-RING*	EVO-13-25-Σ
14	2	UNION NUT*	EVUN-14-∞-25
15	2	UNION INSERT*	EVUI-15-∞-Δ-Φ

UNDERLINED ITEMS REQUIRE CODES FROM ABOVE CHART
*OPTIONAL FEATURE (AVAILABLE IN PLASTIC ONLY)

DO NOT COPY WITHOUT PRIOR WRITTEN APPROVAL FROM PRIMARY FLUID SYSTEMS INC.

PRIMARY FLUID SYSTEMS INC.
1050 Cooke Blvd., Burlington, Ontario L7T 4A8

**ECO BACK PRESSURE OR PRESSURE RELIEF VALVE
EXPLODED PARTS VIEW**

DATE ISSUED: 18-DEC-11 | SCALE: NTS | SHEET: 1 OF 1
PROJECT: ECO VALVE A-SERIES | DRAWN BY: VICTOR V.

APPROVED BY: [Signature] | DWG NO: EV-APA-253850STD-XPL | REV.#: 4

ECO Valve

25 (1/4") – 38 (3/8") – 50 (1/2")

CODE E

Item #	Description	Material	Size	Part #	Price
1	Bonnet	CPVC (Corzan)	1/4", 3/8", 1/2"	EVT-1CPVC-25	134.00
	Bonnet	316 S/S	1/4", 3/8", 1/2"	EVT-1SS-25	305.00
	Bonnet	Aluminum	1/4", 3/8", 1/2"	EVT-1A-25	123.00
2	Body, Back & Pressure Relief	CPVC (Corzan)	1/2"	EVB-2CPVC-50-BSPT	350.00
	Body, Back & Pressure Relief	CPVC (Corzan)	1/2"	EVB-2CPVC-50-NPT	350.00
	Body, Back & Pressure Relief	CPVC (Corzan)	1/2"	EVB-2CPVC-50-FLG	538.00
	Body, Back & Pressure Relief	CPVC (Corzan)	1/2"	EVB-2CPVC-50-SOC	350.00
	Body, Back & Pressure Relief	CPVC (Corzan)	1/2"	EVB-2CPVC-50-SOC-M	350.00
	Body, Back & Pressure Relief	CPVC (Corzan)	1/2"	EVB-2CPVC-50-UNN	471.00
	Body, Back & Pressure Relief	CPVC (Corzan)	3/8"	EVB-2CPVC-38-BSPT	295.00
	Body, Back & Pressure Relief	CPVC (Corzan)	3/8"	EVB-2CPVC-38-NPT	295.00
	Body, Back & Pressure Relief	CPVC (Corzan)	3/8"	EVB-2CPVC-38-SOC	295.00
	Body, Back & Pressure Relief	CPVC (Corzan)	3/8"	EVB-2CPVC-38-SOC-M	295.00
	Body, Back & Pressure Relief	CPVC (Corzan)	3/8"	EVB-2CPVC-38-UNN	318.00
	Body, Back & Pressure Relief	CPVC (Corzan)	1/4"	EVB-2CPVC-25-BSPT	276.00
	Body, Back & Pressure Relief	CPVC (Corzan)	1/4"	EVB-2CPVC-25-NPT	276.00
	Body, Back & Pressure Relief	CPVC (Corzan)	1/4"	EVB-2CPVC-25-SOC	276.00
	Body, Back & Pressure Relief	CPVC (Corzan)	1/4"	EVB-2CPVC-25-SOC-M	276.00
	Body, Back & Pressure Relief	CPVC (Corzan)	1/4"	EVB-2CPVC-25-UNN	304.00
	Body, Back & Pressure Relief	Polypropylene	1/2"	EVB-2PP-50-BSPT	308.00
	Body, Back & Pressure Relief	Polypropylene	1/2"	EVB-2PP-50-NPT	308.00
	Body, Back & Pressure Relief	Polypropylene	1/2"	EVB-2PP-50-FLG	513.00
	Body, Back & Pressure Relief	Polypropylene	1/2"	EVB-2PP-50-SOC	308.00
	Body, Back & Pressure Relief	Polypropylene	1/2"	EVB-2PP-50-SOC-M	308.00
	Body, Back & Pressure Relief	Polypropylene	1/2"	EVB-2PP-50-UNN	349.00
	Body, Back & Pressure Relief	Polypropylene	3/8"	EVB-2PP-38-BSPT	251.00
	Body, Back & Pressure Relief	Polypropylene	3/8"	EVB-2PP-38-NPT	251.00
	Body, Back & Pressure Relief	Polypropylene	3/8"	EVB-2PP-38-SOC	251.00
	Body, Back & Pressure Relief	Polypropylene	3/8"	EVB-2PP-38-SOC-M	251.00
	Body, Back & Pressure Relief	Polypropylene	3/8"	EVB-2PP-38-UNN	269.00

Item #	Description	Material	Size	Part #	Price
	Body, Back & Pressure Relief	Polypropylene	1/4"	EVB-2PP-25-BSPT	227.00
	Body, Back & Pressure Relief	Polypropylene	1/4"	EVB-2PP-25-NPT	227.00
	Body, Back & Pressure Relief	Polypropylene	1/4"	EVB-2PP-25-SOC	227.00
	Body, Back & Pressure Relief	Polypropylene	1/4"	EVB-2PP-25-SOC-M	227.00
	Body, Back & Pressure Relief	Polypropylene	1/4"	EVB-2PP-25-UNN	240.00
	Body, Back & Pressure Relief	PVC	1/2"	EVB-2PVC-50-BSPT	272.00
	Body, Back & Pressure Relief	PVC	1/2"	EVB-2PVC-50-NPT	272.00
	Body, Back & Pressure Relief	PVC	1/2"	EVB-2PVC-50-FLG	403.00
	Body, Back & Pressure Relief	PVC	1/2"	EVB-2PVC-50-SOC	272.00
	Body, Back & Pressure Relief	PVC	1/2"	EVB-2PVC-50-SOC-M	272.00
	Body, Back & Pressure Relief	PVC	1/2"	EVB-2PVC-50-UNN	320.00
	Body, Back & Pressure Relief	PVC	3/8"	EVB-2PVC-38-BSPT	244.00
	Body, Back & Pressure Relief	PVC	3/8"	EVB-2PVC-38-NPT	244.00
	Body, Back & Pressure Relief	PVC	3/8"	EVB-2PVC-38-SOC	244.00
	Body, Back & Pressure Relief	PVC	3/8"	EVB-2PVC-38-SOC-M	244.00
	Body, Back & Pressure Relief	PVC	3/8"	EVB-2PVC-38-UNN	260.00
	Body, Back & Pressure Relief	PVC	1/4"	EVB-2PVC-25-BSPT	219.00
	Body, Back & Pressure Relief	PVC	1/4"	EVB-2PVC-25-NPT	219.00
	Body, Back & Pressure Relief	PVC	1/4"	EVB-2PVC-25-SOC	219.00
	Body, Back & Pressure Relief	PVC	1/4"	EVB-2PVC-25-SOC-M	219.00
	Body, Back & Pressure Relief	PVC	1/4"	EVB-2PVC-25-UNN	238.00
	Body, Back & Pressure Relief	PVDF	1/2"	EVB-2PVDF-50-BPST	564.00
	Body, Back & Pressure Relief	PVDF	1/2"	EVB-2PVDF-50-NPT	564.00
	Body, Back & Pressure Relief	PVDF	1/2"	EVB-2PVDF-50-FLG	940.00
	Body, Back & Pressure Relief	PVDF	1/2"	EVB-2PVDF-50-SOC	564.00
	Body, Back & Pressure Relief	PVDF	1/2"	EVB-2PVDF-50-SOC-M	564.00
	Body, Back & Pressure Relief	PVDF	1/2"	EVB-2PVDF-50-UNN	633.00
	Body, Back & Pressure Relief	PVDF	3/8"	EVB-2PVDF-38-BSPT	515.00
	Body, Back & Pressure Relief	PVDF	3/8"	EVB-2PVDF-38-NPT	515.00
	Body, Back & Pressure Relief	PVDF	3/8"	EVB-2PVDF-38-SOC	515.00

Item #	Description	Material	Size	Part #	Price
	Body, Back & Pressure Relief	PVDF	3/8"	EVB-2PVDF-38-SOC-M	515.00
	Body, Back & Pressure Relief	PVDF	3/8"	EVB-2PVDF-38-UNN	562.00
	Body, Back & Pressure Relief	PVDF	1/4"	EVB-2PVDF-25-BSPT	403.00
	Body, Back & Pressure Relief	PVDF	1/4"	EVB-2PVDF-25-NPT	403.00
	Body, Back & Pressure Relief	PVDF	1/4"	EVB-2PVDF-25-SOC	403.00
	Body, Back & Pressure Relief	PVDF	1/4"	EVB-2PVDF-25-SOC-M	403.00
	Body, Back & Pressure Relief	PVDF	1/4"	EVB-2PVDF-25-UNN	447.00
	Body, Back & Pressure Relief	Stainless Steel	1/2"	EVB-2SS-50-BSPT	628.00
	Body, Back & Pressure Relief	Stainless Steel	1/2"	EVB-2SS-50-NPT	628.00
	Body, Back & Pressure Relief	Stainless Steel	1/2"	EVB-2SS-50-FLG	1,122.00
	Body, Back & Pressure Relief	Stainless Steel	1/2"	EVB-2SS-50-SOC	628.00
	Body, Back & Pressure Relief	Stainless Steel	1/2"	EVB-2SS-50-SOC-M	628.00
	Body, Back & Pressure Relief	Stainless Steel	3/8"	EVB-2SS-38-BSPT	481.00
	Body, Back & Pressure Relief	Stainless Steel	3/8"	EVB-2SS-38-NPT	481.00
	Body, Back & Pressure Relief	Stainless Steel	3/8"	EVB-2SS-38-SOC	481.00
	Body, Back & Pressure Relief	Stainless Steel	3/8"	EVB-2SS-38-SOC-M	481.00
	Body, Back & Pressure Relief	Stainless Steel	1/4"	EVB-2SS-25-BSPT	456.00
	Body, Back & Pressure Relief	Stainless Steel	1/4"	EVB-2SS-25-NPT	456.00
	Body, Back & Pressure Relief	Stainless Steel	1/4"	EVB-2SS-25-SOC	456.00
	Body, Back & Pressure Relief	Stainless Steel	1/4"	EVB-2SS-25-SOC-M	456.00
3	Diaphragm	EPDM	1/4", 3/8", 1/2"	EVD-3-25-E	43.00
	Diaphragm	Viton	1/4", 3/8", 1/2"	EVD-3-25-V	43.00
	Diaphragm	PTFE/EPDM	1/4", 3/8", 1/2"	EVD-3-25	43.00
4	Adjusting Bolt	Stainless Steel	1/4", 3/8", 1/2"	EVAB-4-25	2.80
5	Spring	Stainless Steel (Nickel Plated)	1/4", 3/8", 1/2"	EVS-5-25	30.00
6	Top Disc	Polypropylene	1/4", 3/8", 1/2"	EVTD-6-25	8.10
7	Bottom Disc	Polypropylene	1/4", 3/8", 1/2"	EVBD-7-25	10.75
8	Bolts SS (Plastic)	Stainless Steel	1/4", 3/8", 1/2"	EVSB-8-25	1.10
8A	Bolts SS (Metal)	Stainless Steel	1/4", 3/8", 1/2"	EVSB-8A-25	1.10
9	Lock Nut SS	Stainless Steel	1/4", 3/8", 1/2"	EVBN-9-25	0.95
10	Bolt Cap Cover	Vinyl	1/4", 3/8", 1/2"	EVBC-10-25	0.47
11	Gauge Port Cap	Nylon	1/4", 3/8", 1/2"	EVGC-11	0.47
12	Bonnet Cap Cover	Vinyl	1/4", 3/8", 1/2"	EVTC-12-BK-25	1.30
	Bonnet Cap Cover	Vinyl	1/4", 3/8", 1/2"	EVTC-12-BR-25	1.30

Item #	Description	Material	Size	Part #	Price
	Bonnet Cap Cover	Vinyl	1/4", 3/8", 1/2"	EVTC-12-G-25	1.30
	Bonnet Cap Cover	Vinyl	1/4", 3/8", 1/2"	EVTC-12-Y-25	1.30
13	Union Seal O-Ring	EPDM	1/4", 3/8", 1/2"	EVO-13-25-E	1.60
	Union Seal O-Ring	Viton	1/4", 3/8", 1/2"	EVO-13-25-V	3.25
14	Union Nut	CPVC	1/4", 3/8", 1/2"	EVUN-14-CPVC-25	12.50
	Union Nut	PP	1/4", 3/8", 1/2"	EVUN-14-PP-25	12.50
	Union Nut	PVC	1/4", 3/8", 1/2"	EVUN-14-PVC-25	7.10
	Union Nut	PVDF	1/4", 3/8", 1/2"	EVUN-14-PVDF-25	25.00
15	Union Insert	CPVC (Corzan)	1/2"	EVUI-15-CPVC-BSP-50	11.25
	Union Insert	CPVC (Corzan)	1/2"	EVUI-15-CPVC-NPT-50	11.25
	Union Insert	CPVC (Corzan)	1/2"	EVUI-15-CPVC-SOC-50	5.95
	Union Insert	CPVC (Corzan)	1/2"	EVUI-15-CPVC-SOC-M-50	5.95
	Union Insert	CPVC (Corzan)	3/8"	EVUI-15-CPVC-BSPT-38	11.25
	Union Insert	CPVC (Corzan)	3/8"	EVUI-15-CPVC-NPT-38	11.25
	Union Insert	CPVC (Corzan)	3/8"	EVUI-15-CPVC-SOC-38	5.95
	Union Insert	CPVC (Corzan)	3/8"	EVUI-15-CPVC-SOC-M-38	5.95
	Union Insert	CPVC (Corzan)	1/4"	EVUI-15-CPVC-BSPT-25	10.75
	Union Insert	CPVC (Corzan)	1/4"	EVUI-15-CPVC-NPT-25	10.75
	Union Insert	CPVC (Corzan)	1/4"	EVUI-15-CPVC-SOC-25	5.65
	Union Insert	CPVC (Corzan)	1/4"	EVUI-15-CPVC-SOC-M-25	5.65
	Union Insert	Polypropylene	1/2"	EVUI-15-PP-BSP-50	12.50
	Union Insert	Polypropylene	1/2"	EVUI-15-PP-NPT-50	12.50
	Union Insert	Polypropylene	1/2"	EVUI-15-PP-SOC-50	5.65
	Union Insert	Polypropylene	1/2"	EVUI-15-PP-SOC-M-50	5.65
	Union Insert	Polypropylene	3/8"	EVUI-15-PP-BSPT-38	13.75
	Union Insert	Polypropylene	3/8"	EVUI-15-PP-NPT-38	13.75
	Union Insert	Polypropylene	3/8"	EVUI-15-PP-SOC-38	5.65
	Union Insert	Polypropylene	3/8"	EVUI-15-PP-SOC-M-38	5.65
	Union Insert	Polypropylene	1/4"	EVUI-15-PP-BSPT-25	13.75
	Union Insert	Polypropylene	1/4"	EVUI-15-PP-NPT-25	13.75
	Union Insert	Polypropylene	1/4"	EVUI-15-PP-SOC-25	5.65
	Union Insert	Polypropylene	1/4"	EVUI-15-PP-SOC-M-25	5.65
	Union Insert	PVC	1/2"	EVUI-15-PVC-BSP-50	6.55
	Union Insert	PVC	1/2"	EVUI-15-PVC-NPT-50	6.55
	Union Insert	PVC	1/2"	EVUI-15-PVC-SOC-50	3.55
	Union Insert	PVC	1/2"	EVUI-15-PVC-SOC-M-50	3.55
	Union Insert	PVC	3/8"	EVUI-15-PVC-BSPT-38	8.35
	Union Insert	PVC	3/8"	EVUI-15-PVC-NPT-38	8.35
	Union Insert	PVC	3/8"	EVUI-15-PVC-SOC-38	3.55
	Union Insert	PVC	3/8"	EVUI-15-PVC-SOC-M-38	3.55
	Union Insert	PVC	1/4"	EVUI-15-PVC-BSPT-25	8.10
	Union Insert	PVC	1/4"	EVUI-15-PVC-NPT-25	8.10

					CODE E
Item #	Description	Material	Size	Part #	Price
	Union Insert	PVC	1/4"	EVUI-15-PVC-SOC-25	3.55
	Union Insert	PVC	1/4"	EVUI-15-PVC-SOC-M-25	3.55
	Union Insert	PVDF	1/2"	EVUI-15-PVDF-BSP-50	25.00
	Union Insert	PVDF	1/2"	EVUI-15-PVDF-NPT-50	25.00
	Union Insert	PVDF	1/2"	EVUI-15-PVDF-SOC-50	21.00
	Union Insert	PVDF	1/2"	EVUI-15-PVDF-SOC-M-50	21.00
	Union Insert	PVDF	3/8"	EVUI-15-PVDF-BSPT-38	25.00
	Union Insert	PVDF	3/8"	EVUI-15-PVDF-NPT-38	25.00
	Union Insert	PVDF	3/8"	EVUI-15-PVDF-SOC-38	20.00
	Union Insert	PVDF	3/8"	EVUI-15-PVDF-SOC-M-38	20.00
	Union Insert	PVDF	1/4"	EVUI-15-PVDF-BSPT-25	25.00
	Union Insert	PVDF	1/4"	EVUI-15-PVDF-NPT-25	25.00
	Union Insert	PVDF	1/4"	EVUI-15-PVDF-SOC-25	21.00
	Union Insert	PVDF	1/4"	EVUI-15-PVDF-SOC-M-25	21.00

Terms

Prices quoted are in Canadian Funds
 Net 30 days firm (upon approved credit)
 F.O.B. Burlington, Ontario, Canada

All Freight charges are extra

Stock to (1) one week normal delivery on standard items

Options and specials consult factory

Prices subject to change without notice

Minimum order of \$100.00 net

Recommended Spare Parts Service Kit

CODE E

Part #	To Suit Model #	Description	Price
EV25E	Eco Valve 1/4"	EPDM Diaph. Spring, Top and Bottom Disc	94.00
EV25V	Eco Valve 1/4"	Viton Diaph., Spring, Top and Bottom Disc	94.00
EV25T	Eco Valve 1/4"	PTFE/EPDM Diaph., Spring, Top and Bottom Disc	94.00
EV38E	Eco Valve 3/8"	EPDM Diaph. Spring, Top and Bottom Disc	94.00
EV38V	Eco Valve 3/8"	Viton Diaph., Spring, Top and Bottom Disc	94.00
EV38T	Eco Valve 3/8"	PTFE/EPDM Diaph., Spring, Top and Bottom Disc	94.00
EV50E	Eco Valve 1/2"	EPDM Diaph. Spring, Top and Bottom Disc	94.00
EV50V	Eco Valve 1/2"	Viton Diaph., Spring, Top and Bottom Disc	94.00
EV50T	Eco Valve 1/2"	PTFE/EPDM Diaph., Spring, Top and Bottom Disc	94.00

Body Configuration

Back Pressure Valves (Pressure Retaining Valves)

Body Configuration Model ECO-25 Dimensions
 ECO-38
 ECO-50

Nominal Size		PVC, CPVC, PP & PVDF						
NPS Inch	DIN DN	Ø D inch mm	h inch mm	H inch mm	L inch mm	L inch mm	L inch mm	
SERIES-A		Thrd Soc Flg Unin						
1/4	8	2.50 63.5	0.66 16.7	4.48 113.9	3.40 86.4	3.40 86.4	N/A	6.00 152.4
3/8	10	2.50 63.5	0.66 16.7	4.48 113.9	3.40 86.4	3.40 86.4	N/A	6.00 152.4
1/2	15	2.50 63.5	0.66 16.7	4.48 113.9	3.40 86.4	3.40 86.4	5.40 137.2	6.00 152.4

Nominal Size		316L SS						
NPS Inch	DIN DN	Ø D inch mm	h inch mm	H inch mm	L inch mm	L inch mm	L inch mm	
SERIES-A		Thrd Soc Flg						
1/4	8	2.50 63.5	0.60 15.2	4.47 113.5	2.50 63.5	2.50 63.5	N/A	
3/8	10	2.50 63.5	0.49 12.4	4.58 116.3	2.50 63.5	2.50 63.5	N/A	
1/2	15	2.50 63.5	0.60 15.2	4.72 119.8	2.50 63.5	2.50 63.5	6.25 158.8	

Series "B" Exploded View – Back Pressure / Pressure Relief Valve 1/2" High Flow (ECO-55), 3/4" (ECO-75), 1" (ECO-100) ECO Valve

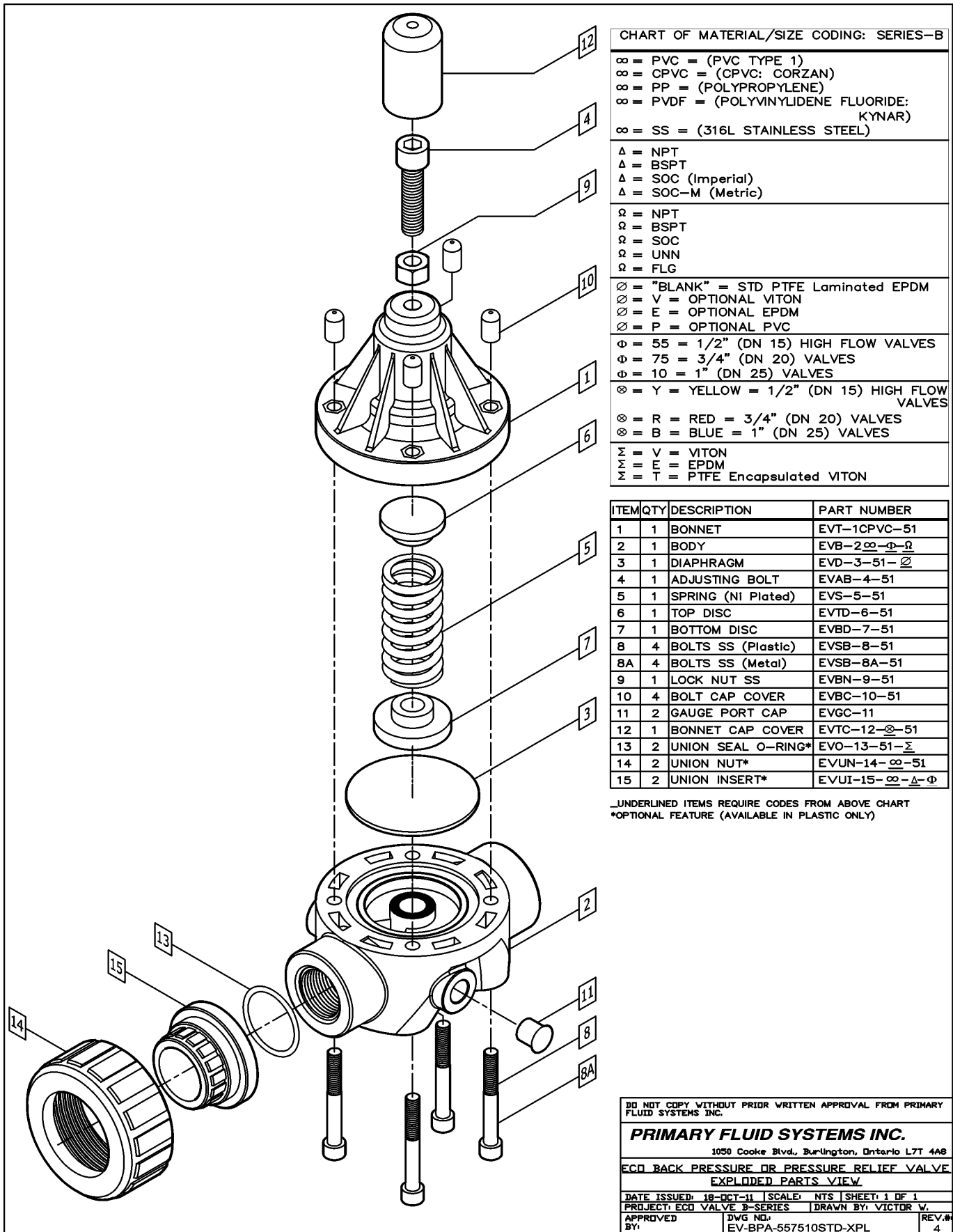


CHART OF MATERIAL/SIZE CODING: SERIES-B

∞ = PVC = (PVC TYPE 1)
 ∞ = CPVC = (CPVC: CORZAN)
 ∞ = PP = (POLYPROPYLENE)
 ∞ = PVDF = (POLYVINYLIDENE FLUORIDE: KYNAR)
 ∞ = SS = (316L STAINLESS STEEL)

Δ = NPT
 Δ = BSPT
 Δ = SOC (Imperial)
 Δ = SOC-M (Metric)

Ω = NPT
 Ω = BSPT
 Ω = SOC
 Ω = UNN
 Ω = FLG

∅ = "BLANK" = STD PTFE Laminated EPDM
 ∅ = V = OPTIONAL VITON
 ∅ = E = OPTIONAL EPDM
 ∅ = P = OPTIONAL PVC

Φ = 55 = 1/2" (DN 15) HIGH FLOW VALVES
 Φ = 75 = 3/4" (DN 20) VALVES
 Φ = 10 = 1" (DN 25) VALVES

⊗ = Y = YELLOW = 1/2" (DN 15) HIGH FLOW VALVES
 ⊗ = R = RED = 3/4" (DN 20) VALVES
 ⊗ = B = BLUE = 1" (DN 25) VALVES

Σ = V = VITON
 Σ = E = EPDM
 Σ = T = PTFE Encapsulated VITON

ITEM	QTY	DESCRIPTION	PART NUMBER
1	1	BONNET	EVT-1CPVC-51
2	1	BODY	EVB-2 <u>∞-Φ-Ω</u>
3	1	DIAPHRAGM	EVD-3-51-∅
4	1	ADJUSTING BOLT	EVAB-4-51
5	1	SPRING (NI Plated)	EVS-5-51
6	1	TOP DISC	EVTD-6-51
7	1	BOTTOM DISC	EVBD-7-51
8	4	BOLTS SS (Plastic)	EVSB-8-51
8A	4	BOLTS SS (Metal)	EVSB-8A-51
9	1	LOCK NUT SS	EVBN-9-51
10	4	BOLT CAP COVER	EVBC-10-51
11	2	GAUGE PORT CAP	EVGC-11
12	1	BONNET CAP COVER	EVTC-12-∅-51
13	2	UNION SEAL O-RING*	EVO-13-51-Σ
14	2	UNION NUT*	EVUN-14-∞-51
15	2	UNION INSERT*	EVUI-15-∞-Δ-Φ

UNDERLINED ITEMS REQUIRE CODES FROM ABOVE CHART
 *OPTIONAL FEATURE (AVAILABLE IN PLASTIC ONLY)

DO NOT COPY WITHOUT PRIOR WRITTEN APPROVAL FROM PRIMARY FLUID SYSTEMS INC.

PRIMARY FLUID SYSTEMS INC.
 1050 Cooke Blvd, Burlington, Ontario L7T 4A8

**ECO BACK PRESSURE OR PRESSURE RELIEF VALVE
 EXPLODED PARTS VIEW**

DATE ISSUED: 18-OCT-11 | SCALE: NTS | SHEET: 1 OF 1
 PROJECT: ECO VALVE B-SERIES | DRAWN BY: VICTOR W.
 APPROVED BY: | DWG NO: EV-BPA-557510STD-XPL | REV.# 4

ECO Valve

55 (1/2" High Flow) – 75 (3/4") – 100 (1")

CODE E

Item #	Description	Material	Size	Part #	Price
1	Bonnet	CPVC (Corzan)	1/2", 3/4", 1"	EVT-1CPVC-51	176.00
	Bonnet	316 S/S	1/2", 3/4", 1"	EVT-1SS-51	347.00
	Bonnet	Aluminum	1/2", 3/4", 1"	EVT-1AL-51	168.00
2	Body, Back & Pressure Relief	CPVC (Corzan)	1"	EVB-2CPVC-10-BSP	715.00
	Body, Back & Pressure Relief	CPVC (Corzan)	1"	EVB-2CPVC-10-NPT	715.00
	Body, Back & Pressure Relief	CPVC (Corzan)	1"	EVB-2CPVC-10-FLG	892.00
	Body, Back & Pressure Relief	CPVC (Corzan)	1"	EVB-2CPVC-10-SOC	715.00
	Body, Back & Pressure Relief	CPVC (Corzan)	1"	EVB-2CPVC-10-SOC-M	715.00
	Body, Back & Pressure Relief	CPVC (Corzan)	1"	EVB-2CPVC-10-UNN	741.00
	Body, Back & Pressure Relief	CPVC (Corzan)	3/4"	EVB-2CPVC-75-BSP	482.00
	Body, Back & Pressure Relief	CPVC (Corzan)	3/4"	EVB-2CPVC-75-NPT	482.00
	Body, Back & Pressure Relief	CPVC (Corzan)	3/4"	EVB-2CPVC-75-FLG	623.00
	Body, Back & Pressure Relief	CPVC (Corzan)	3/4"	EVB-2CPVC-75-SOC	482.00
	Body, Back & Pressure Relief	CPVC (Corzan)	3/4"	EVB-2CPVC-75-SOC-M	482.00
	Body, Back & Pressure Relief	CPVC (Corzan)	3/4"	EVB-2CPVC-75-UNN	497.00
	Body, Back & Pressure Relief	CPVC (Corzan)	1/2"	EVB-2CPVC-55-BSP	454.00
	Body, Back & Pressure Relief	CPVC (Corzan)	1/2"	EVB-2CPVC-55-NPT	454.00
	Body, Back & Pressure Relief	CPVC (Corzan)	1/2"	EVB-2CPVC-55-FLG	588.00
	Body, Back & Pressure Relief	CPVC (Corzan)	1/2"	EVB-2CPVC-55-SOC	454.00
	Body, Back & Pressure Relief	CPVC (Corzan)	1/2"	EVB-2CPVC-55-SOC-M	454.00
	Body, Back & Pressure Relief	CPVC (Corzan)	1/2"	EVB-2CPVC-55-UNN	471.00
	Body, Back & Pressure Relief	Polypropylene	1"	EVB-2PP-10-BSP	520.00
	Body, Back & Pressure Relief	Polypropylene	1"	EVB-2PP-10-NPT	520.00
	Body, Back & Pressure Relief	Polypropylene	1"	EVB-2PP-10-FLG	965.00
	Body, Back & Pressure Relief	Polypropylene	1"	EVB-2PP-10-SOC	520.00
	Body, Back & Pressure Relief	Polypropylene	1"	EVB-2PP-10-SOC-M	520.00
	Body, Back & Pressure Relief	Polypropylene	1"	EVB-2PP-10-UNN	488.00
	Body, Back & Pressure Relief	Polypropylene	3/4"	EVB-2PP-75-BSP	405.00
	Body, Back & Pressure Relief	Polypropylene	3/4"	EVB-2PP-75-NPT	405.00
	Body, Back & Pressure Relief	Polypropylene	3/4"	EVB-2PP-75-FLG	840.00

Item #	Description	Material	Size	Part #	Price
	Body, Back & Pressure Relief	Polypropylene	3/4"	EVB-2PP-75-SOC	405.00
	Body, Back & Pressure Relief	Polypropylene	3/4"	EVB-2PP-75-SOC-M	405.00
	Body, Back & Pressure Relief	Polypropylene	3/4"	EVB-2PP-75-UNN	442.00
	Body, Back & Pressure Relief	Polypropylene	1/2"	EVB-2PP-55-BSP	375.00
	Body, Back & Pressure Relief	Polypropylene	1/2"	EVB-2PP-55-NPT	375.00
	Body, Back & Pressure Relief	Polypropylene	1/2"	EVB-2PP-55-FLG	719.00
	Body, Back & Pressure Relief	Polypropylene	1/2"	EVB-2PP-55-SOC	375.00
	Body, Back & Pressure Relief	Polypropylene	1/2"	EVB-2PP-55-SOC-M	375.00
	Body, Back & Pressure Relief	Polypropylene	1/2"	EVB-2PP-55-UNN	384.00
	Body, Back & Pressure Relief	PVC	1"	EVB-2PVC-10-BSP	516.00
	Body, Back & Pressure Relief	PVC	1"	EVB-2PVC-10-NPT	516.00
	Body, Back & Pressure Relief	PVC	1"	EVB-2PVC-10-FLG	668.00
	Body, Back & Pressure Relief	PVC	1"	EVB-2PVC-10-SOC	516.00
	Body, Back & Pressure Relief	PVC	1"	EVB-2PVC-10-SOC-M	516.00
	Body, Back & Pressure Relief	PVC	1"	EVB-2PVC-10-UNN	538.00
	Body, Back & Pressure Relief	PVC	3/4"	EVB-2PVC-75-BSP	399.00
	Body, Back & Pressure Relief	PVC	3/4"	EVB-2PVC-75-NPT	399.00
	Body, Back & Pressure Relief	PVC	3/4"	EVB-2PVC-75-FLG	517.00
	Body, Back & Pressure Relief	PVC	3/4"	EVB-2PVC-75-SOC	399.00
	Body, Back & Pressure Relief	PVC	3/4"	EVB-2PVC-75-SOC-M	399.00
	Body, Back & Pressure Relief	PVC	3/4"	EVB-2PVC-75-UNN	431.00
	Body, Back & Pressure Relief	PVC	1/2"	EVB-2PVC-55-BSP	363.00
	Body, Back & Pressure Relief	PVC	1/2"	EVB-2PVC-55-NPT	363.00
	Body, Back & Pressure Relief	PVC	1/2"	EVB-2PVC-55-FLG	471.00
	Body, Back & Pressure Relief	PVC	1/2"	EVB-2PVC-55-SOC	363.00
	Body, Back & Pressure Relief	PVC	1/2"	EVB-2PVC-55-SOC-M	363.00
	Body, Back & Pressure Relief	PVC	1/2"	EVB-2PVC-55-UNN	400.00
	Body, Back & Pressure Relief	PVDF	1"	EVB-2PVDF-10-BSP	940.00
	Body, Back & Pressure Relief	PVDF	1"	EVB-2PVDF-10-NPT	940.00
	Body, Back & Pressure Relief	PVDF	1"	EVB-2PVDF-10-FLG	1,633.00

Item #	Description	Material	Size	Part #	Price
	Body, Back & Pressure Relief	PVDF	1"	EVB-2PVDF-10-SOC	940.00
	Body, Back & Pressure Relief	PVDF	1"	EVB-2PVDF-10-SOC-M	940.00
	Body, Back & Pressure Relief	PVDF	1"	EVB-2PVDF-10-UNN	1,009.00
	Body, Back & Pressure Relief	PVDF	3/4"	EVB-2PVDF-75-BSP	856.00
	Body, Back & Pressure Relief	PVDF	3/4"	EVB-2PVDF-75-NPT	856.00
	Body, Back & Pressure Relief	PVDF	3/4"	EVB-2PVDF-75-FLG	1,209.00
	Body, Back & Pressure Relief	PVDF	3/4"	EVB-2PVDF-75-SOC	856.00
	Body, Back & Pressure Relief	PVDF	3/4"	EVB-2PVDF-75-SOC-M	856.00
	Body, Back & Pressure Relief	PVDF	3/4"	EVB-2PVDF-75-UNN	935.00
	Body, Back & Pressure Relief	PVDF	1/2"	EVB-2PVDF-55-BSPT	685.00
	Body, Back & Pressure Relief	PVDF	1/2"	EVB-2PVDF-55-NPT	685.00
	Body, Back & Pressure Relief	PVDF	1/2"	EVB-2PVDF-55-FLG	1,100.00
	Body, Back & Pressure Relief	PVDF	1/2"	EVB-2PVDF-55-SOC	685.00
	Body, Back & Pressure Relief	PVDF	1/2"	EVB-2PVDF-55-SOC-M	685.00
	Body, Back & Pressure Relief	PVDF	1/2"	EVB-2PVDF-55-UNN	748.00
	Body, Back & Pressure Relief	Stainless Steel	1"	EVB-2SS-10-BSPT	1,049.00
	Body, Back & Pressure Relief	Stainless Steel	1"	EVB-2SS-10-NPT	1,049.00
	Body, Back & Pressure Relief	Stainless Steel	1"	EVB-2SS-10-FLG	1,862.00
	Body, Back & Pressure Relief	Stainless Steel	1"	EVB-2SS-10-SOC	1,049.00
	Body, Back & Pressure Relief	Stainless Steel	1"	EVB-2SS-10-SOC-M	1,049.00
	Body, Back & Pressure Relief	Stainless Steel	3/4"	EVB-2SS-75-BSPT	796.00
	Body, Back & Pressure Relief	Stainless Steel	3/4"	EVB-2SS-75-NPT	796.00
	Body, Back & Pressure Relief	Stainless Steel	3/4"	EVB-2SS-75-FLG	1,394.00
	Body, Back & Pressure Relief	Stainless Steel	3/4"	EVB-2SS-75-SOC	796.00
	Body, Back & Pressure Relief	Stainless Steel	3/4"	EVB-2SS-75-SOC-M	796.00
	Body, Back & Pressure Relief	Stainless Steel	1/2"	EVB-2SS-55-BSP	761.00
	Body, Back & Pressure Relief	Stainless Steel	1/2"	EVB-2SS-55-NPT	761.00
	Body, Back & Pressure Relief	Stainless Steel	1/2"	EVB-2SS-55-FLG	1,326.00
	Body, Back & Pressure Relief	Stainless Steel	1/2"	EVB-2SS-55-SOC	761.00
	Body, Back & Pressure Relief	Stainless Steel	1/2"	EVB-2SS-55-SOC-M	761.00
3	Diaphragm	EPDM	1/2", 3/4", 1"	EVD-3-51-E	98.00

Item #	Description	Material	Size	Part #	Price
	Diaphragm	Viton	1/2", 3/4", 1"	EVD-3-51-V	98.00
	Diaphragm	PTFE/EPDM	1/2", 3/4", 1"	EVD-3-51	98.00
4	Adjusting Bolt	Stainless Steel	1/2", 3/4", 1"	EVAB-4-51	2.75
5	Spring	Stainless Steel (Nickel Plated)	1/2', 3/4' & 1"	EVS-5-51	54.00
6	Top Disc	Polypropylene	1/2', 3/4' & 1"	EVTD-6-51	8.10
7	Bottom Disc	Polypropylene	1/2', 3/4' & 1"	EVBD-7-51	10.75
8	Bolts SS (Plastic)	Stainless Steel	1/2', 3/4' & 1"	EVSB-8-51	3.10
8A	Bolts SS (Metal)	Stainless Steel	1/2', 3/4' & 1"	EVSB-8A-51	3.10
9	Lock Nut SS	Stainless Steel	1/2', 3/4' & 1"	EVBN-9-51	0.96
10	Bolt Cap Cover	Vinyl	1/2', 3/4' & 1"	EVBC-10-51	0.40
11	Gauge Port Cap	Nylon	1/2', 3/4' & 1"	EVGC-11	0.47
12	Bonnet Cap Cover	Vinyl	1/2', 3/4' & 1"	EVTC-12-B-51	1.30
	Bonnet Cap Cover	Vinyl	1/2', 3/4' & 1"	EVTC-12-R-51	1.30
	Bonnet Cap Cover	Vinyl	1/2', 3/4' & 1"	EVTC-12-Y-51	1.30
13	Union Seal O-Ring	EPDM	1/2', 3/4' & 1"	EVO-13-51-E	1.80
	Union Seal O-Ring	Viton	1/2', 3/4' & 1"	EVO-13-51-V	3.85
14	Union Nut	CPVC	1/2', 3/4' & 1"	EVUN-14-CPVC-51	14.25
	Union Nut	PP	1/2', 3/4' & 1"	EVUN-14-PP-51	17.00
	Union Nut	PVC	1/2', 3/4' & 1"	EVUN-14-PVC-51	8.60
	Union Nut	PVDF	1/2', 3/4' & 1"	EVUN-14-PVDF-51	28.00
15	Union Insert	CPVC (Corzan)	1"	EVUI-15-CPVC-BSPT-10	14.25
	Union Insert	CPVC (Corzan)	1"	EVUI-15-CPVC-NPT-10	14.25
	Union Insert	CPVC (Corzan)	1"	EVUI-15-CPVC-SOC-10	6.25
	Union Insert	CPVC (Corzan)	1"	EVUI-15-CPVC-SOC-M-10	6.25
	Union Insert	CPVC (Corzan)	3/4"	EVUI-15-CPVC-BSPT-75	12.50
	Union Insert	CPVC (Corzan)	3/4"	EVUI-15-CPVC-NPT-75	12.50
	Union Insert	CPVC (Corzan)	3/4"	EVUI-15-CPVC-SOC-75	6.25
	Union Insert	CPVC (Corzan)	3/4"	EVUI-15-CPVC-SOC-M-75	6.25
	Union Insert	CPVC (Corzan)	1/2"	EVUI-15-CPVC-BSPT-55	10.25
	Union Insert	CPVC (Corzan)	1/2"	EVUI-15-CPVC-NPT-55	10.25
	Union Insert	CPVC (Corzan)	1/2"	EVUI-15-CPVC-SOC-55	5.05
	Union Insert	CPVC (Corzan)	1/2"	EVUI-15-CPVC-SOC-M-55	5.05
	Union Insert	Polypropylene	1"	EVUI-15-PP-BSPT-10	10.75
	Union Insert	Polypropylene	1"	EVUI-15-PP-NPT-10	10.75
	Union Insert	Polypropylene	1"	EVUI-15-PP-SOC-10	10.25
	Union Insert	Polypropylene	1"	EVUI-15-PP-SOC-M-10	10.25
	Union Insert	Polypropylene	3/4"	EVUI-15-PP-BSP-75	8.60
	Union Insert	Polypropylene	3/4"	EVUI-15-PP-NPT-75	8.60
	Union Insert	Polypropylene	3/4"	EVUI-15-PP-SOC-75	8.60
	Union Insert	Polypropylene	3/4"	EVUI-15-PP-SOC-M-75	8.60
	Union Insert	Polypropylene	1/2"	EVUI-15-PP-BSP-55	6.85

Item #	Description	Material	Size	Part #	Price
	Union Insert	Polypropylene	1/2"	EVUI-15-PP-NPT-55	6.85
	Union Insert	Polypropylene	1/2"	EVUI-15-PP-SOC-55	6.85
	Union Insert	Polypropylene	1/2"	EVUI-15-PP-SOC-M-55	6.85
	Union Insert	PVC	1"	EVUI-15-PVC-BSPT-10	9.20
	Union Insert	PVC	1"	EVUI-15-PVC-NPT-10	9.20
	Union Insert	PVC	1"	EVUI-15-PVC-SOC-10	6.25
	Union Insert	PVC	1"	EVUI-15-PVC-SOC-M-10	6.25
	Union Insert	PVC	3/4"	EVUI-15-PVC-BSP-75	7.10
	Union Insert	PVC	3/4"	EVUI-15-PVC-NPT-75	7.10
	Union Insert	PVC	3/4"	EVUI-15-PVC-SOC-75	5.05
	Union Insert	PVC	3/4"	EVUI-15-PVC-SOC-M-75	5.05
	Union Insert	PVC	1/2"	EVUI-15-PVC-BSP-55	6.85
	Union Insert	PVC	1/2"	EVUI-15-PVC-NPT-55	6.85
	Union Insert	PVC	1/2"	EVUI-15-PVC-SOC-55	4.25
	Union Insert	PVC	1/2"	EVUI-15-PVC-SOC-M-55	4.25
	Union Insert	PVDF	1"	EVUI-15-PVDF-BSPT-10	33.00
	Union Insert	PVDF	1"	EVUI-15-PVDF-NPT-10	33.00
	Union Insert	PVDF	1"	EVUI-15-PVDF-SOC-10	28.00
	Union Insert	PVDF	1"	EVUI-15-PVDF-SOC-M-10	28.00
	Union Insert	PVDF	3/4"	EVUI-15-PVDF-BSP-75	33.00
	Union Insert	PVDF	3/4"	EVUI-15-PVDF-NPT-75	33.00
	Union Insert	PVDF	3/4"	EVUI-15-PVDF-SOC-75	28.00
	Union Insert	PVDF	3/4"	EVUI-15-PVDF-SOC-M-75	28.00
	Union Insert	PVDF	1/2"	EVUI-15-PVDF-BSP-55	28.00
	Union Insert	PVDF	1/2"	EVUI-15-PVDF-NPT-55	28.00
	Union Insert	PVDF	1/2"	EVUI-15-PVDF-SOC-55	22.00
	Union Insert	PVDF	1/2"	EVUI-15-PVDF-SOC-M-55	22.00

Recommended Spare Parts Service Kit

CODE E

Part #	To Suit Model #	Description	Price
EV55E	ECO Valve 1/2"	EPDM Diaph. Spring, Top and Bottom Disc	167.00
EV55V	ECO Valve 1/2"	Viton Diaph., Spring, Top and Bottom Disc	167.00
EV55T	ECO Valve 1/2"	PTFE/EPDM Diaph., Spring, Top and Bottom Disc	167.00
EV75E	ECO Valve 3/4"	EPDM Diaph. Spring, Top and Bottom Disc	167.00
EV75V	ECO Valve 3/4"	Viton Diaph., Spring, Top and Bottom Disc	167.00
EV75T	ECO Valve 3/4"	PTFE/EPDM Diaph., Spring, Top and Bottom Disc	167.00
EV10E	ECO Valve 1"	EPDM Diaph. Spring, Top and Bottom Disc	167.00
EV10V	ECO Valve 1"	Viton Diaph., Spring, Top and Bottom Disc	167.00
EV10T	ECO Valve 1"	PTFE/EPDM Diaph., Spring, Top and Bottom Disc	167.00

Body Configuration

Back Pressure Valves (Pressure Retaining Valves)
1/2" High Flow, 3/4", 1" ECO Valves

Body Configuration Model ECO-55 Dimensions
ECO-75
ECO-100

Nominal Size		PVC, CPVC, PP & PVDF							
NPS Inch	DIN DN	Ø D inch mm	h inch mm	H inch mm	L inch mm	L inch mm	L inch mm	L inch mm	
SERIES-B					Thrd	Soc	Flg	Unin	
1/2 High Flow	15	3.50 88.9	0.88 22.4	4.80 121.9	4.85 123.2	4.85 123.2	6.93 176.0	6.96 176.8	
3/4	20	3.50 88.9	0.88 22.4	4.80 121.9	4.85 123.2	7.17 182.1	6.96 176.8		
1	25	3.50 88.9	0.88 22.4	4.80 121.9	4.85 123.2	7.48 190.0	6.96 176.8		

Nominal Size		316L SS							
NPS Inch	DIN DN	Ø D inch mm	h inch mm	H inch mm	L inch mm	L inch mm	L inch mm	L inch mm	
SERIES-B					Thrd	Soc	Flg		
1/2 High Flow	15	3.50 88.9	0.63 16.0	4.80 121.9	3.50 88.9	3.50 88.9	7.25 184.2		
3/4	20	3.50 88.9	0.73 18.5	4.80 121.9	3.50 88.9	3.50 88.9	7.63 193.8		
1	25	3.50 88.9	0.86 21.8	5.10 129.5	3.50 88.9	3.50 88.9	7.88 200.2		

Exploded View – Back Pressure / Pressure Relief Valve ECO-110, ECO-125, ECO-150, ECO-200

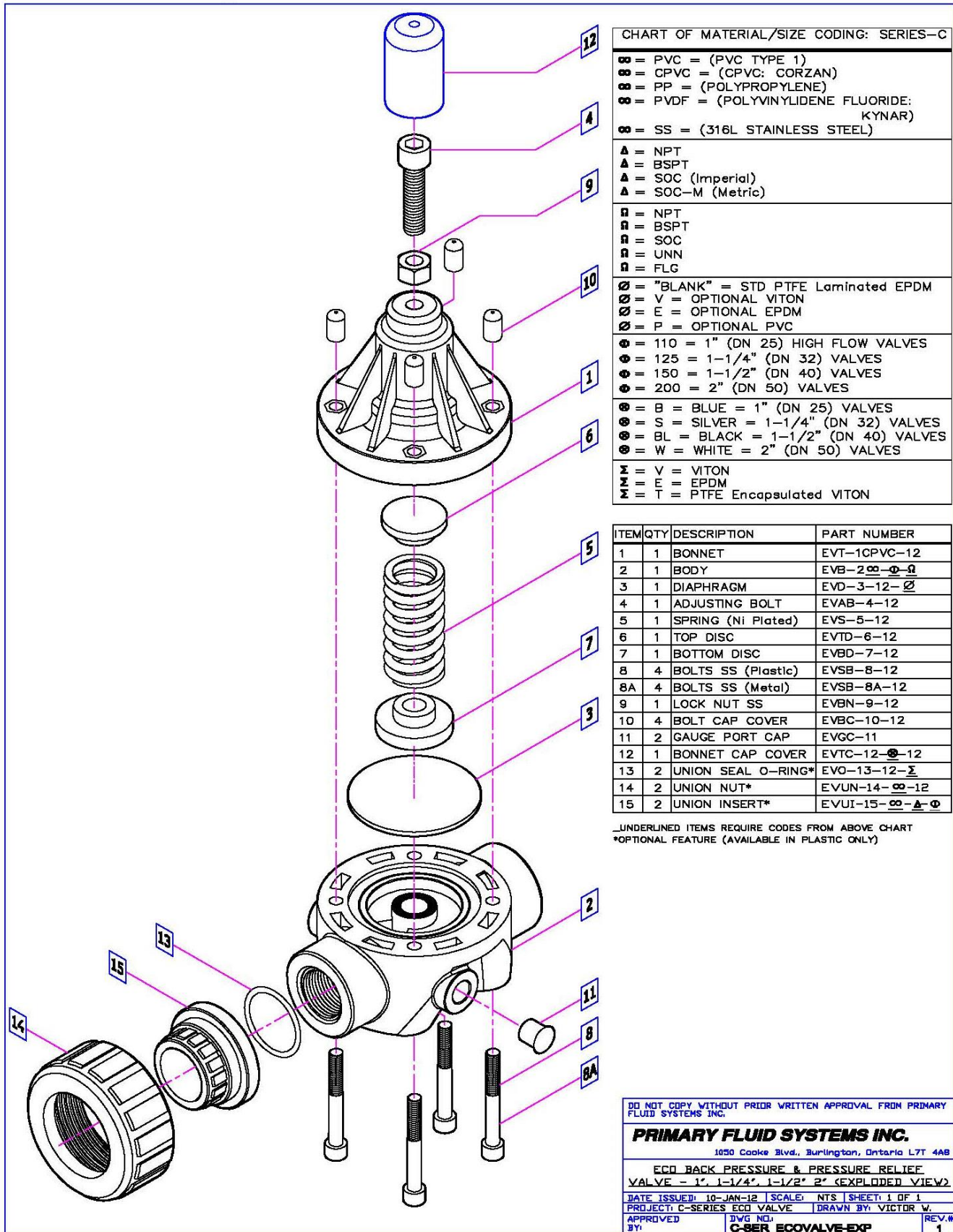


CHART OF MATERIAL/SIZE CODING: SERIES-C

- ∞ = PVC = (PVC TYPE 1)
 - ∞∞ = CPVC = (CPVC: CORZAN)
 - ∞ = PP = (POLYPROPYLENE)
 - ∞ = PVDF = (POLYVINYLIDENE FLUORIDE: KYNAR)
 - ∞∞ = SS = (316L STAINLESS STEEL)
- ▲ = NPT
 - ▲ = BSPT
 - ▲ = SOC (Imperial)
 - ▲ = SOC-M (Metric)
- = NPT
 - = BSPT
 - = SOC
 - = UNN
 - = FLG
- ∅ = "BLANK" = STD PTFE Laminated EPDM
 - ∅ = V = OPTIONAL VITON
 - ∅ = E = OPTIONAL EPDM
 - ∅ = P = OPTIONAL PVC
- Φ = 110 = 1" (DN 25) HIGH FLOW VALVES
 - Φ = 125 = 1-1/4" (DN 32) VALVES
 - Φ = 150 = 1-1/2" (DN 40) VALVES
 - Φ = 200 = 2" (DN 50) VALVES
- ⊗ = B = BLUE = 1" (DN 25) VALVES
 - ⊗ = S = SILVER = 1-1/4" (DN 32) VALVES
 - ⊗ = BL = BLACK = 1-1/2" (DN 40) VALVES
 - ⊗ = W = WHITE = 2" (DN 50) VALVES
- Σ = V = VITON
 - Σ = E = EPDM
 - Σ = T = PTFE Encapsulated VITON

ITEM	QTY	DESCRIPTION	PART NUMBER
1	1	BONNET	EVT-1CPVC-12
2	1	BODY	EVB-2∞-∅-□
3	1	DIAPHRAGM	EVD-3-12-∅
4	1	ADJUSTING BOLT	EVAB-4-12
5	1	SPRING (Ni Plated)	EVS-5-12
6	1	TOP DISC	EVTD-6-12
7	1	BOTTOM DISC	EVBD-7-12
8	4	BOLTS SS (Plastic)	EVSB-8-12
8A	4	BOLTS SS (Metal)	EVSB-8A-12
9	1	LOCK NUT SS	EVBN-9-12
10	4	BOLT CAP COVER	EVBC-10-12
11	2	GAUGE PORT CAP	EVGC-11
12	1	BONNET CAP COVER	EVTC-12-∅-12
13	2	UNION SEAL O-RING*	EVO-13-12-Σ
14	2	UNION NUT*	EVUN-14-∞-12
15	2	UNION INSERT*	EVUI-15-∞-▲-Φ

_*UNDERLINED ITEMS REQUIRE CODES FROM ABOVE CHART
*_OPTIONAL FEATURE (AVAILABLE IN PLASTIC ONLY)

DO NOT COPY WITHOUT PRIOR WRITTEN APPROVAL FROM PRIMARY FLUID SYSTEMS INC.

PRIMARY FLUID SYSTEMS INC.

1050 Cooke Blvd., Burlington, Ontario L7T 4A8

ECO BACK PRESSURE & PRESSURE RELIEF VALVE - 1", 1-1/4", 1-1/2", 2" (EXPLODED VIEW)

DATE ISSUED: 10-JAN-12 SCALE: NTS SHEET: 1 OF 1

PROJECT: C-SERIES ECO VALVE DRAWN BY: VICTOR W.

APPROVED BY: DAVE NCI C-SER ECOVALVE-EXP REV.# 1

ECO Valve

110 (1" High Flow) – 125 (1 1/4") – 150 (1 1/2") – 200 (2")

CODE E

Item #	Description	Material	Size	Part #	Price
1	Bonnet	CPVC (Corzan)	1", 1 1/4", 1 1/2", 2"	EVT-1CPVC-12	231.00
	Bonnet	316 S/S	1", 1 1/4", 1 1/2", 2"	EVT-1SS-12	509.00
	Bonnet	Aluminum	1", 1 1/4", 1 1/2", 2"	EVT-1AL-12	247.00
2	Body, Back & Pressure Relief	CPVC (Corzan)	2"	EVB-2CPVC-200-BSP	1,435.00
	Body, Back & Pressure Relief	CPVC (Corzan)	2"	EVB-2CPVC-200-NPT	1,435.00
	Body, Back & Pressure Relief	CPVC (Corzan)	2"	EVB-2CPVC-200-FLG	1,936.00
	Body, Back & Pressure Relief	CPVC (Corzan)	2"	EVB-2CPVC-200-SOC	1,435.00
	Body, Back & Pressure Relief	CPVC (Corzan)	2"	EVB-2CPVC-200-SOC-M	1,435.00
	Body, Back & Pressure Relief	CPVC (Corzan)	2"	EVB-2CPVC-200-UNN	1,566.00
	Body, Back & Pressure Relief	CPVC (Corzan)	1 1/2"	EVB-2CPVC-150-BSP	851.00
	Body, Back & Pressure Relief	CPVC (Corzan)	1 1/2"	EVB-2CPVC-150-NPT	851.00
	Body, Back & Pressure Relief	CPVC (Corzan)	1 1/2"	EVB-2CPVC-150-FLG	1,148.00
	Body, Back & Pressure Relief	CPVC (Corzan)	1 1/2"	EVB-2CPVC-150-SOC	851.00
	Body, Back & Pressure Relief	CPVC (Corzan)	1 1/2"	EVB-2CPVC-150-SOC-M	851.00
	Body, Back & Pressure Relief	CPVC (Corzan)	1 1/2"	EVB-2CPVC-150-UNN	927.00
	Body, Back & Pressure Relief	CPVC (Corzan)	1 1/4"	EVB-2CPVC-125-BSP	791.00
	Body, Back & Pressure Relief	CPVC (Corzan)	1 1/4"	EVB-2CPVC-125-NPT	791.00
	Body, Back & Pressure Relief	CPVC (Corzan)	1 1/4"	EVB-2CPVC-125-FLG	1,065.00
	Body, Back & Pressure Relief	CPVC (Corzan)	1 1/4"	EVB-2CPVC-125-SOC	791.00
	Body, Back & Pressure Relief	CPVC (Corzan)	1 1/4"	EVB-2CPVC-125-SOC-M	791.00
	Body, Back & Pressure Relief	CPVC (Corzan)	1 1/4"	EVB-2CPVC-125-UNN	859.00
	Body, Back & Pressure Relief	CPVC (Corzan)	1"	EVB-2CPVC-110-BSPT	592.00
	Body, Back & Pressure Relief	CPVC (Corzan)	1"	EVB-2CPVC-110-NPT	592.00
	Body, Back & Pressure Relief	CPVC (Corzan)	1"	EVB-2CPVC-110-FLG	795.00
	Body, Back & Pressure Relief	CPVC (Corzan)	1"	EVB-2CPVC-110-SOC	592.00
	Body, Back & Pressure Relief	CPVC (Corzan)	1"	EVB-2CPVC-110-SOC-M	592.00
	Body, Back & Pressure Relief	Polypropylene	2"	EVB-2PP-200-BSPT	1,043.00
	Body, Back & Pressure Relief	Polypropylene	2"	EVB-2PP-200-NPT	1,043.00
	Body, Back & Pressure Relief	Polypropylene	2"	EVB-2PP-200-FLG	1,404.00
	Body, Back & Pressure Relief	Polypropylene	2"	EVB-2PP-200-SOC	1,043.00

Item #	Description	Material	Size	Part #	Price
	Body, Back & Pressure Relief	Polypropylene	2"	EVB-2PP-200-SOC-M	1,043.00
	Body, Back & Pressure Relief	Polypropylene	2"	EVB-2PP-200-UNN	1,136.00
	Body, Back & Pressure Relief	Polypropylene	1 1/2"	EVB-2PP-150-BSPT	810.00
	Body, Back & Pressure Relief	Polypropylene	1 1/2"	EVB-2PP-150-NPT	810.00
	Body, Back & Pressure Relief	Polypropylene	1 1/2"	EVB-2PP-150-FLG	1,087.00
	Body, Back & Pressure Relief	Polypropylene	1 1/2"	EVB-2PP-150-SOC	810.00
	Body, Back & Pressure Relief	Polypropylene	1 1/2"	EVB-2PP-150-SOC-M	810.00
	Body, Back & Pressure Relief	Polypropylene	1 1/2"	EVB-2PP-150-UNN	878.00
	Body, Back & Pressure Relief	Polypropylene	1 1/4"	EVB-2PP-125-BSPT	719.00
	Body, Back & Pressure Relief	Polypropylene	1 1/4"	EVB-2PP-125-NPT	719.00
	Body, Back & Pressure Relief	Polypropylene	1 1/4"	EVB-2PP-125-FLG	970.00
	Body, Back & Pressure Relief	Polypropylene	1 1/4"	EVB-2PP-125-SOC	719.00
	Body, Back & Pressure Relief	Polypropylene	1 1/4"	EVB-2PP-125-SOC-M	719.00
	Body, Back & Pressure Relief	Polypropylene	1 1/4"	EVB-2PP-125-UNN	785.00
	Body, Back & Pressure Relief	Polypropylene	1"	EVB-2PP-110-BSP	690.00
	Body, Back & Pressure Relief	Polypropylene	1"	EVB-2PP-110-NPT	690.00
	Body, Back & Pressure Relief	Polypropylene	1"	EVB-2PP-110-FLG	927.00
	Body, Back & Pressure Relief	Polypropylene	1"	EVB-2PP-110-SOC	690.00
	Body, Back & Pressure Relief	Polypropylene	1"	EVB-2PP-110-SOC-M	690.00
	Body, Back & Pressure Relief	Polypropylene	1"	EVB-2PP-110-UNN	751.00
	Body, Back & Pressure Relief	PVC	2"	EVB-2PVC-200-BSP	989.00
	Body, Back & Pressure Relief	PVC	2"	EVB-2PVC-200-NPT	989.00
	Body, Back & Pressure Relief	PVC	2"	EVB-2PVC-200-FLG	1,334.00
	Body, Back & Pressure Relief	PVC	2"	EVB-2PVC-200-SOC	989.00
	Body, Back & Pressure Relief	PVC	2"	EVB-2PVC-200-SOC-M	989.00
	Body, Back & Pressure Relief	PVC	2"	EVB-2PVC-200-UNN	1,080.00
	Body, Back & Pressure Relief	PVC	1 1/2"	EVB-2PVC-150-BSP	763.00
	Body, Back & Pressure Relief	PVC	1 1/2"	EVB-2PVC-150-NPT	763.00
	Body, Back & Pressure Relief	PVC	1 1/2"	EVB-2PVC-150-FLG	1,029.00
	Body, Back & Pressure Relief	PVC	1 1/2"	EVB-2PVC-150-SOC	763.00
	Body, Back & Pressure Relief	PVC	1 1/2"	EVB-2PVC-150-SOC-M	763.00

Item #	Description	Material	Size	Part #	Price
	Body, Back & Pressure Relief	PVC	1 ½"	EVB-2PVC-150-UNN	831.00
	Body, Back & Pressure Relief	PVC	1 ¼"	EVB-2PVC-125-BSPT	692.00
	Body, Back & Pressure Relief	PVC	1 ¼"	EVB-2PVC-125-NPT	692.00
	Body, Back & Pressure Relief	PVC	1 ¼"	EVB-2PVC-125-FLG	936.00
	Body, Back & Pressure Relief	PVC	1 ¼"	EVB-2PVC-125-SOC	692.00
	Body, Back & Pressure Relief	PVC	1 ¼"	EVB-2PVC-125-SOC-M	692.00
	Body, Back & Pressure Relief	PVC	1 ¼"	EVB-2PVC-125-UNN	755.00
	Body, Back & Pressure Relief	PVC	1"	EVB-2PVC-110-BSPT	644.00
	Body, Back & Pressure Relief	PVC	1"	EVB-2PVC-110-NPT	644.00
	Body, Back & Pressure Relief	PVC	1"	EVB-2PVC-110-FLG	868.00
	Body, Back & Pressure Relief	PVC	1"	EVB-2PVC-110-SOC	644.00
	Body, Back & Pressure Relief	PVC	1"	EVB-2PVC-110-SOC-M	644.00
	Body, Back & Pressure Relief	PVC	1"	EVB-2PVC-110-UNN	703.00
	Body, Back & Pressure Relief	PVDF	2"	EVB-2PVDF-200-BSPT	3,056.00
	Body, Back & Pressure Relief	PVDF	2"	EVB-2PVDF-200-NPT	3,056.00
	Body, Back & Pressure Relief	PVDF	2"	EVB-2PVDF-200-FLG	4,121.00
	Body, Back & Pressure Relief	PVDF	2"	EVB-2PVDF-200-SOC	3,056.00
	Body, Back & Pressure Relief	PVDF	2"	EVB-2PVDF-200-SOC-M	3,056.00
	Body, Back & Pressure Relief	PVDF	2"	EVB-2PVDF-200-UNN	3,331.00
	Body, Back & Pressure Relief	PVDF	1 ½"	EVB-2PVDF-150-BSPT	1,750.00
	Body, Back & Pressure Relief	PVDF	1 ½"	EVB-2PVDF-150-NPT	1,750.00
	Body, Back & Pressure Relief	PVDF	1 ½"	EVB-2PVDF-150-FLG	2,360.00
	Body, Back & Pressure Relief	PVDF	1 ½"	EVB-2PVDF-150-SOC	1,750.00
	Body, Back & Pressure Relief	PVDF	1 ½"	EVB-2PVDF-150-SOC-M	1,750.00
	Body, Back & Pressure Relief	PVDF	1 ½"	EVB-2PVDF-150-UNN	1,909.00
	Body, Back & Pressure Relief	PVDF	1 ¼"	EVB-2PVDF-125-BSPT	1,595.00
	Body, Back & Pressure Relief	PVDF	1 ¼"	EVB-2PVDF-125-NPT	1,595.00
	Body, Back & Pressure Relief	PVDF	1 ¼"	EVB-2PVDF-125-FLG	2,148.00
	Body, Back & Pressure Relief	PVDF	1 ¼"	EVB-2PVDF-125-SOC	1,595.00
	Body, Back & Pressure Relief	PVDF	1 ¼"	EVB-2PVDF-125-SOC-M	1,595.00
	Body, Back & Pressure Relief	PVDF	1 ¼"	EVB-2PVDF-125-UNN	1,738.00

Item #	Description	Material	Size	Part #	Price
	Body, Back & Pressure Relief	PVDF	1"	EVB-2PVDF-110-BSPT	1,510.00
	Body, Back & Pressure Relief	PVDF	1"	EVB-2PVDF-110-NPT	1,510.00
	Body, Back & Pressure Relief	PVDF	1"	EVB-2PVDF-110-FLG	2,036.00
	Body, Back & Pressure Relief	PVDF	1"	EVB-2PVDF-110-SOC	1,510.00
	Body, Back & Pressure Relief	PVDF	1"	EVB-2PVDF-110-SOC-M	1,510.00
	Body, Back & Pressure Relief	PVDF	1"	EVB-2PVDF-110-UNN	1,647.00
	Body, Back & Pressure Relief	Stainless Steel	2"	EVB-2SS-200-BSPT	3,192.00
	Body, Back & Pressure Relief	Stainless Steel	2"	EVB-2SS-200-NPT	3,192.00
	Body, Back & Pressure Relief	Stainless Steel	2"	EVB-2SS-200-FLG	4,471.00
	Body, Back & Pressure Relief	Stainless Steel	2"	EVB-2SS-200-SOC	3,192.00
	Body, Back & Pressure Relief	Stainless Steel	2"	EVB-2SS-200-SOC-M	3,192.00
	Body, Back & Pressure Relief	Stainless Steel	1 1/2"	EVB-2SS-150-BSP	2,084.00
	Body, Back & Pressure Relief	Stainless Steel	1 1/2"	EVB-2SS-150-NPT	2,084.00
	Body, Back & Pressure Relief	Stainless Steel	1 1/2"	EVB-2SS-150-FLG	3,230.00
	Body, Back & Pressure Relief	Stainless Steel	1 1/2"	EVB-2SS-150-SOC	2,084.00
	Body, Back & Pressure Relief	Stainless Steel	1 1/2"	EVB-2SS-150-SOC-M	2,084.00
	Body, Back & Pressure Relief	Stainless Steel	1 1/4"	EVB-2SS-125-BSP	1,890.00
	Body, Back & Pressure Relief	Stainless Steel	1 1/4"	EVB-2SS-125-NPT	1,890.00
	Body, Back & Pressure Relief	Stainless Steel	1 1/4"	EVB-2SS-125-FLG	2,720.00
	Body, Back & Pressure Relief	Stainless Steel	1 1/4"	EVB-2SS-125-SOC	1,890.00
	Body, Back & Pressure Relief	Stainless Steel	1 1/4"	EVB-2SS-125-SOC-M	1,890.00
	Body, Back & Pressure Relief	Stainless Steel	1"	EVB-2SS-110-BSP	1,794.00
	Body, Back & Pressure Relief	Stainless Steel	1"	EVB-2SS-110-NPT	1,794.00
	Body, Back & Pressure Relief	Stainless Steel	1"	EVB-2SS-110-FLG	2,593.00
	Body, Back & Pressure Relief	Stainless Steel	1"	EVB-2SS-110-SOC	1,794.00
	Body, Back & Pressure Relief	Stainless Steel	1"	EVB-2SS-110-SOC-M	1,794.00
3	Diaphragm	EPDM	1", 1 1/4", 1 1/2", 2"	EVD-3-12-E	123.00
	Diaphragm	Viton	1", 1 1/4", 1 1/2", 2"	EVD-3-12-V	123.00
	Diaphragm	PTFE/EPDM	1", 1 1/4", 1 1/2", 2"	EVD-3-12	123.00
4	Adjusting Bolt	Stainless Steel	1", 1 1/4", 1 1/2", 2"	EVAB-4-12	3.55
5	Spring	Stainless Steel (Nickel Plated)	1", 1 1/4", 1 1/2", 2"	EVS-5-12	65.00
6	Top Disc	Polypropylene	1", 1 1/4", 1 1/2", 2"	EVTD-6-12	8.60

Item #	Description	Material	Size	Part #	Price
7	Bottom Disc	Polypropylene	1", 1 1/4", 1 1/2", 2"	EVBD-7-12	11.25
8	Bolts SS (Plastic)	Stainless Steel	1", 1 1/4", 1 1/2", 2"	EVSB-8-12	7.10
8A	Bolts SS (Metal)	Stainless Steel	1", 1 1/4", 1 1/2", 2"	EVSB-8A-12	7.10
9	Lock Nut SS	Stainless Steel	1", 1 1/4", 1 1/2", 2"	EVBN-9-12	1.45
10	Bolt Cap Cover	Vinyl	1", 1 1/4", 1 1/2", 2"	EVBC-10-12	0.40
11	Gauge Port Cap	Nylon	1", 1 1/4", 1 1/2", 2"	EVGC-11	0.47
12	Bonnet Cap Cover	Vinyl	1", 1 1/4", 1 1/2", 2"	EVTC-12-B-12	1.30
	Bonnet Cap Cover	Vinyl	1", 1 1/4", 1 1/2", 2"	EVTC-12-R-12	1.30
	Bonnet Cap Cover	Vinyl	1", 1 1/4", 1 1/2", 2"	EVTC-12-Y-12	1.30
13	Union Seal O-Ring	EPDM	1", 1 1/4", 1 1/2", 2"	EVO-13-12-E	3.55
	Union Seal O-Ring	Viton	1", 1 1/4", 1 1/2", 2"	EVO-13-12-V	14.25
14	Union Nut	CPVC	1", 1 1/4", 1 1/2"	EVUN-14-CPVC-12	30.00
	Union Nut	CPVC	2"	EVUN-14-CPVC-20	38.00
	Union Nut	PP	1", 1 1/4", 1 1/2"	EVUN-14-PP-12	33.00
	Union Nut	PP	2"	EVUN-14-PP-20	33.00
	Union Nut	PVC	1", 1 1/4", 1 1/2"	EVUN-14-PVC-12	23.00
	Union Nut	PVC	2"	EVUN-14-PVC-20	23.00
	Union Nut	PVDF	1", 1 1/4", 1 1/2"	EVUN-14-PVDF-12	77.00
	Union Nut	PVDF	2"	EVUN-14-PVDF-20	75.00
15	Union Insert	CPVC (Corzan)	2"	EVUI-15-CPVC-BSPT-200	90.00
	Union Insert	CPVC (Corzan)	2"	EVUI-15-CPVC-NPT-200	90.00
	Union Insert	CPVC (Corzan)	2"	EVUI-15-CPVC-SOC-200	90.00
	Union Insert	CPVC (Corzan)	2"	EVUI-15-CPVC-SOC-M-200	90.00
	Union Insert	CPVC (Corzan)	1 1/2"	EVUI-15-CPVC-BSPT-150	82.00
	Union Insert	CPVC (Corzan)	1 1/2"	EVUI-15-CPVC-NPT-150	82.00
	Union Insert	CPVC (Corzan)	1 1/2"	EVUI-15-CPVC-SOC-150	82.00
	Union Insert	CPVC (Corzan)	1 1/2"	EVUI-15-CPVC-SOC-M-150	82.00
	Union Insert	CPVC (Corzan)	1 1/4"	EVUI-15-CPVC-BSPT-125	73.00
	Union Insert	CPVC (Corzan)	1 1/4"	EVUI-15-CPVC-NPT-125	73.00
	Union Insert	CPVC (Corzan)	1 1/4"	EVUI-15-CPVC-SOC-125	73.00
	Union Insert	CPVC (Corzan)	1 1/4"	EVUI-15-CPVC-SOC-M-125	73.00
	Union Insert	CPVC (Corzan)	1"	EVUI-15-CPVC-BSPT-110	70.00
	Union Insert	CPVC (Corzan)	1"	EVUI-15-CPVC-NPT-110	70.00
	Union Insert	CPVC (Corzan)	1"	EVUI-15-CPVC-SOC-110	70.00
	Union Insert	CPVC (Corzan)	1"	EVUI-15-CPVC-SOC-M-110	70.00
	Union Insert	Polypropylene	2"	EVUI-15-PP-BSPT-200	85.00
	Union Insert	Polypropylene	2"	EVUI-15-PP-NPT-200	85.00
	Union Insert	Polypropylene	2"	EVUI-15-PP-SOC-200	85.00
	Union Insert	Polypropylene	2"	EVUI-15-PP-SOC-M-200	85.00
	Union Insert	Polypropylene	1 1/2"	EVUI-15-PP-BSPT-150	82.00
	Union Insert	Polypropylene	1 1/2"	EVUI-15-PP-NPT-150	82.00
	Union Insert	Polypropylene	1 1/2"	EVUI-15-PP-SOC-150	82.00
	Union Insert	Polypropylene	1 1/2"	EVUI-15-PP-SOC-M-150	82.00
	Union Insert	Polypropylene	1 1/4"	EVUI-15-PP-BSPT-125	77.00
	Union Insert	Polypropylene	1 1/4"	EVUI-15-PP-NPT-125	77.00
	Union Insert	Polypropylene	1 1/4"	EVUI-15-PP-SOC-125	77.00
	Union Insert	Polypropylene	1 1/4"	EVUI-15-PP-SOC-M-125	77.00

Item #	Description	Material	Size	Part #	Price
	Union Insert	Polypropylene	1"	EVUI-15-PP-BSPT-110	72.00
	Union Insert	Polypropylene	1"	EVUI-15-PP-NPT-110	72.00
	Union Insert	Polypropylene	1"	EVUI-15-PP-SOC-110	72.00
	Union Insert	Polypropylene	1"	EVUI-15-PP-SOC-M-110	72.00
	Union Insert	PVC	2"	EVUI-15-PVC-BSPT-200	68.00
	Union Insert	PVC	2"	EVUI-15-PVC-NPT-200	68.00
	Union Insert	PVC	2"	EVUI-15-PVC-SOC-200	68.00
	Union Insert	PVC	2"	EVUI-15-PVC-SOC-M-200	68.00
	Union Insert	PVC	1 1/2"	EVUI-15-PVC-BSP-150	57.00
	Union Insert	PVC	1 1/2"	EVUI-15-PVC-NPT-150	57.00
	Union Insert	PVC	1 1/2"	EVUI-15-PVC-SOC-150	57.00
	Union Insert	PVC	1 1/2"	EVUI-15-PVC-SOC-M-150	57.00
	Union Insert	PVC	1 1/4"	EVUI-15-PVC-BSPT-125	53.00
	Union Insert	PVC	1 1/4"	EVUI-15-PVC-NPT-125	53.00
	Union Insert	PVC	1 1/4"	EVUI-15-PVC-SOC-125	53.00
	Union Insert	PVC	1 1/4"	EVUI-15-PVC-SOC-M-125	53.00
	Union Insert	PVC	1"	EVUI-15-PVC-BSPT-110	47.00
	Union Insert	PVC	1"	EVUI-15-PVC-NPT-110	47.00
	Union Insert	PVC	1"	EVUI-15-PVC-SOC-110	47.00
	Union Insert	PVC	1"	EVUI-15-PVC-SOC-M-110	47.00
	Union Insert	PVDF	2"	EVUI-15-PVDF-BSPT-200	115.00
	Union Insert	PVDF	2"	EVUI-15-PVDF-NPT-200	115.00
	Union Insert	PVDF	2"	EVUI-15-PVDF-SOC-200	115.00
	Union Insert	PVDF	2"	EVUI-15-PVDF-SOC-M-200	115.00
	Union Insert	PVDF	1 1/2"	EVUI-15-PVDF-BSPT-150	106.00
	Union Insert	PVDF	1 1/2"	EVUI-15-PVDF-NPT-150	106.00
	Union Insert	PVDF	1 1/2"	EVUI-15-PVDF-SOC-150	106.00
	Union Insert	PVDF	1 1/2"	EVUI-15-PVDF-SOC-M-150	106.00
	Union Insert	PVDF	1 1/4"	EVUI-15-PVDF-BSPT-125	101.00
	Union Insert	PVDF	1 1/4"	EVUI-15-PVDF-NPT-125	101.00
	Union Insert	PVDF	1 1/4"	EVUI-15-PVDF-SOC-125	101.00
	Union Insert	PVDF	1 1/4"	EVUI-15-PVDF-SOC-M-125	101.00
	Union Insert	PVDF	1"	EVUI-15-PVDF-BSPT-110	99.00
	Union Insert	PVDF	1"	EVUI-15-PVDF-NPT-110	99.00
	Union Insert	PVDF	1"	EVUI-15-PVDF-SOC-110	99.00
	Union Insert	PVDF	1"	EVUI-15-PVDF-SOC-M-110	99.00

Recommended Spare Parts Service Kit

CODE E

Part #	To Suit Model #	Description	Price
EV110E	ECO Valve 1"	EPDM Diaph. Spring, Top and Bottom Disc	207.00
EV110V	ECO Valve 1"	Viton Diaph., Spring, Top and Bottom Disc	207.00
EV110T	ECO Valve 1"	PTFE/EPDM Diaph., Spring, Top and Bottom Disc	207.00
EV125E	ECO Valve 1 1/4"	EPDM Diaph. Spring, Top and Bottom Disc	207.00
EV125V	ECO Valve 1 1/4"	Viton Diaph., Spring, Top and Bottom Disc	207.00
EV125T	ECO Valve 1 1/4"	PTFE/EPDM Diaph., Spring, Top and Bottom Disc	207.00
EV150E	ECO Valve 1 1/2"	EPDM Diaph. Spring, Top and Bottom Disc	207.00
EV150V	ECO Valve 1 1/2"	Viton Diaph., Spring, Top and Bottom Disc	207.00
EV150T	ECO Valve 1 1/2"	PTFE/EPDM Diaph., Spring, Top and Bottom Disc	207.00
EV200E	ECO Valve 2"	EPDM Diaph. Spring, Top and Bottom Disc	207.00
EV200V	ECO Valve 2"	Viton Diaph., Spring, Top and Bottom Disc	207.00
EV200T	ECO Valve 2"	PTFE/EPDM Diaph., Spring, Top and Bottom Disc	207.00

Body Configuration

Back Pressure Valves (Pressure Retaining Valves)

Body Configuration Model ECO-110 Dimensions
 ECO-125
 ECO-150
 ECO-200

Nominal Size		PVC, CPVC, PP & PVDF						
NPS	DN	Ø D	h	H	L	L	L	L
Inch	mm	Inch	mm	Inch	mm	Inch	mm	Inch
SERIES-C		Thrd Soc Flg Union						
1	25	4.00	1.47	5.75	4.90	4.90	7.59	9.96
		101.6	37.3	146.1	124.5	124.5	192.8	253.0
1 1/4	32	4.00	1.47	5.75	4.90	4.90	7.83	9.96
		101.6	37.3	146.1	124.5	124.5	198.9	253.0
1 1/2	40	4.00	1.47	5.75	6.10	6.10	9.27	9.96
		101.6	37.3	146.1	154.9	154.9	235.5	253.0
2	50	4.00	1.47	5.75	6.10	6.10	9.61	9.96
		101.6	37.3	146.1	154.9	154.9	244.1	253.0

Nominal Size		316L SS						
NPS	DN	Ø D	h	H	L	L	L	L
Inch	mm	Inch	mm	Inch	mm	Inch	mm	Inch
SERIES-C		Thrd Soc Flg						
1	25	4.00	1.05	5.78	4.00	4.00	8.15	
		101.6	26.7	146.8	101.6	101.6	207.0	
1 1/4	32	4.00	1.05	5.78	4.00	4.00	8.14	
		101.6	26.7	146.8	101.6	101.6	206.7	
1 1/2	40	4.00	1.45	5.83	4.72	4.72	9.60	
		101.6	36.8	148.1	119.9	119.9	243.8	
2	50	4.00	1.45	5.82	4.72	4.72	9.72	
		101.6	36.8	147.8	119.9	119.9	246.9	