

Exploded View -- Back Pressure / Pressure Relief Valve 1/4", 3/8", 1/2" ECO Valves

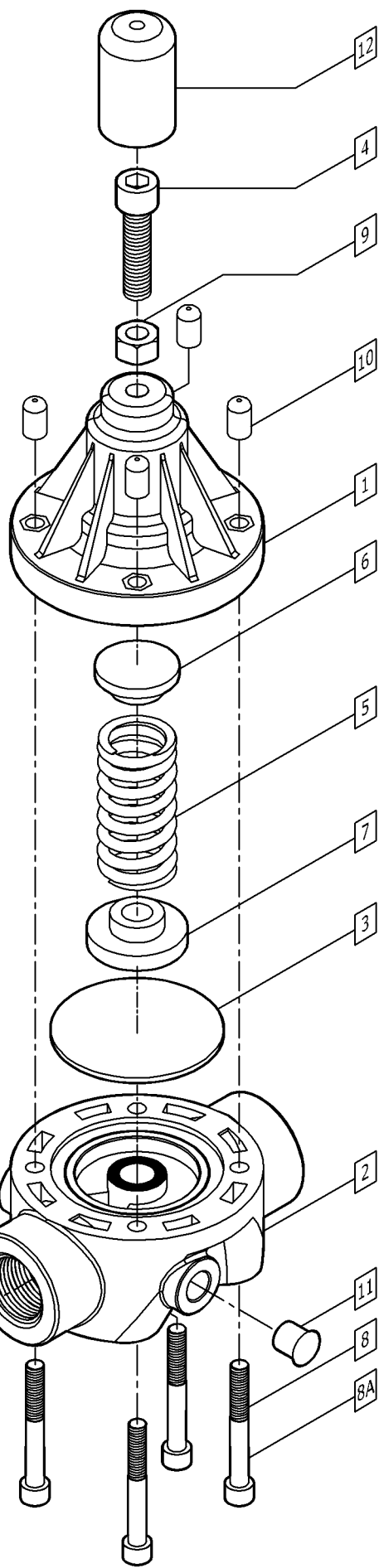


CHART OF MATERIAL/SIZE CODING: SERIES-A

∞ = PVC = (PVC TYPE 1)
 ∞ = CPVC = (CPVC: CORZAN)
 ∞ = PP = (POLYPROPYLENE)
 ∞ = PVDF = (POLYVINYLIDENE FLUORIDE: KYNAR)
 ∞ = SS = (316L STAINLESS STEEL)

Δ = NPT
 Δ = BSPT
 Δ = SOC (Imperial)
 Δ = SOC-M (Metric)

Ω = NPT
 Ω = BSPT
 Ω = SOC
 Ω = UNN
 Ω = FLG

⊗ = "BLANK" = STD TEFLON Laminated EPDM
 ⊗ = V = OPTIONAL VITON
 ⊗ = E = OPTIONAL EPDM
 ⊗ = P = OPTIONAL PVC

Φ = 25 = 1/4" VALVES
 Φ = 38 = 3/8" VALVES
 Φ = 50 = 1/2" VALVES

⊗ = G = GREEN = 1/4" VALVES
 ⊗ = B = BROWN = 3/8" VALVES
 ⊗ = Y = YELLOW = 1/2" VALVES

Σ = V = VITON
 Σ = E = EPDM
 Σ = T = TEFLON Encapsulated VITON

ITEM	QTY	DESCRIPTION	PART NUMBER
1	1	BONNET	EVT-1CPVC-25
2	1	BODY	EVB-2∞-Φ-Ω
3	1	DIAPHRAGM	EVD-3-25-⊗
4	1	ADJUSTING BOLT	EVAB-4-25
5	1	SPRING (Ni Plated)	EVS-5-25
6	1	TOP DISC	EVTD-6-25
7	1	BOTTOM DISC	EVBD-7-25
8	4	BOLTS SS (Plastic)	EVSB-8-25
8A	4	BOLTS SS (Metal)	EVSB-8A-Φ
9	1	LOCK NUT SS	EVBN-9-25
10	4	BOLT CAP COVER	EVBC-10-25
11	2	GAUGE PORT CAP	EVGC-11
12	1	BONNET CAP COVER	EVTC-12-⊗-25
13	2	UNION SEAL O-RING*	EVO-13-25-Σ
14	2	UNION NUT*	EVUN-14-∞-25
15	2	UNION INSERT*	EVUI-15-∞-Δ-Φ

-UNDERLINED ITEMS REQUIRE CODES FROM ABOVE CHART
 *OPTIONAL FEATURE (AVAILABLE IN PLASTIC ONLY)

DO NOT COPY WITHOUT PRIOR WRITTEN APPROVAL FROM PRIMARY FLUID SYSTEMS INC.

PRIMARY FLUID SYSTEMS INC.
 1050 Cooke Blvd., Burlington, Ontario L7T 4A8

ECD BACK PRESSURE & PRESSURE RELIEF VALVE - 1/4", 3/8", 1/2" (EXPLODED VIEW)

DATE ISSUED: 20-APR-09 | SCALE: NTS | SHEET: 1 OF 1
 PROJECT: A-SERIES ECD VALVE | DRAWN BY: SAA

APPROVED BY: [Signature] | DWG NO: A-SER_EXECOVOALV-EXP | REV.# 1