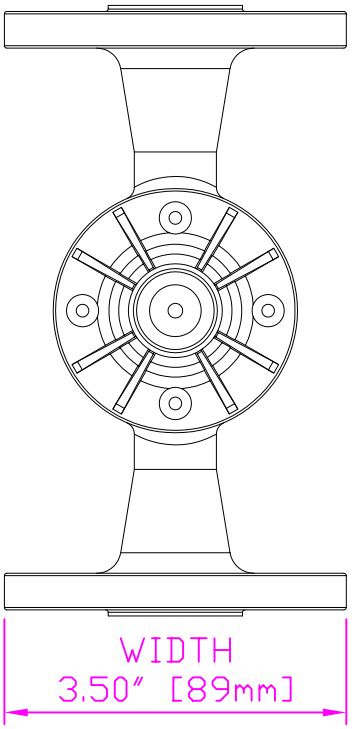
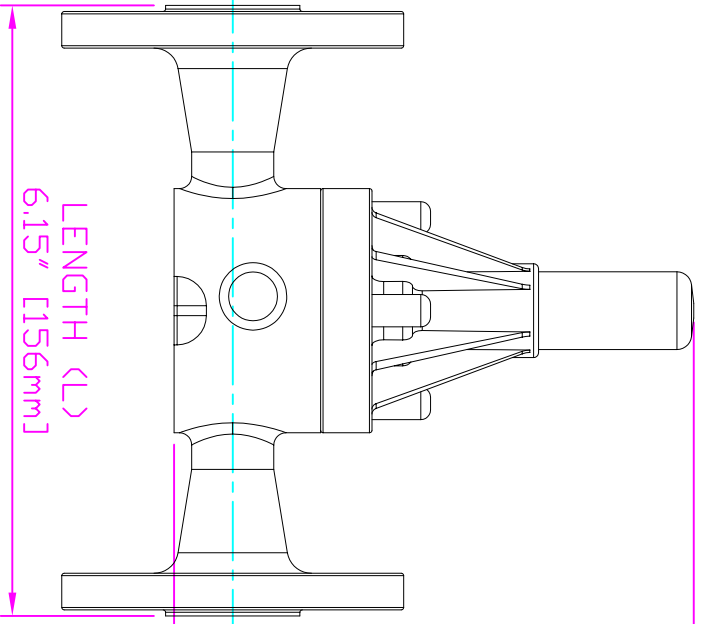


THIS DRAWING IS THE PROPERTY OF PRIMARY FLUID SYSTEMS INC. FROM WHICH A WRITTEN CONSENT FOR APPROVAL SHALL BE REQUIRED PRIOR TO COPYING.



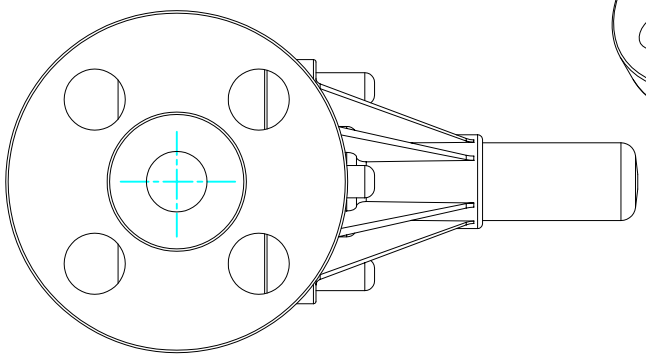
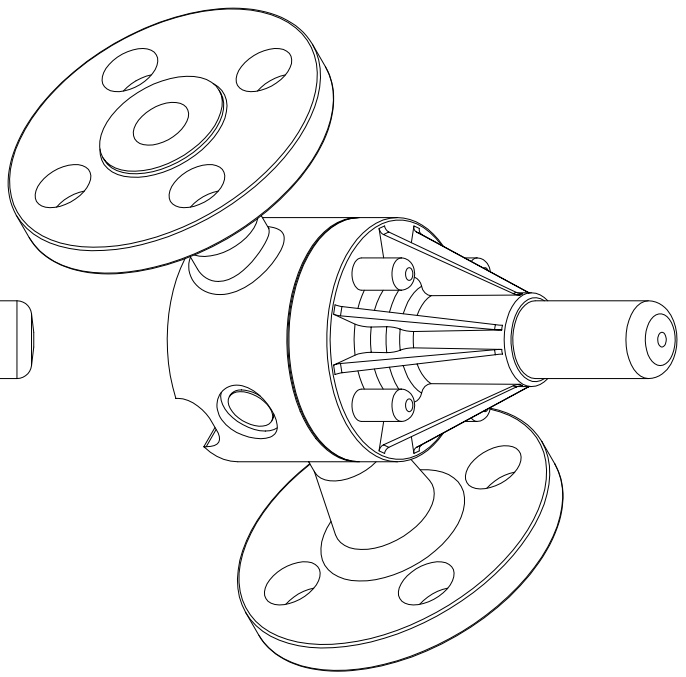
WIDTH
3.50" [89mm]



LENGTH (L)
6.15" [156mm]

HEIGHT (H)
4.72" [120mm]

HEIGHT (h)
0.60" [15mm]



THIS DRAWING WITH DIMENSIONS
APPLY TO FOLLOWING MODELS:

- ECD-50E-ALL20-T
- ECD-50E-HAST-T
- ECD-50E-SS-T
- ECD-50F-ALL20-T
- ECD-50F-HAST-T
- ECD-50F-SS-T

PRIMARY FLUID SYSTEMS INC.

1050 Cooke Blvd., Burlington, Ontario L7T 4A8

TITLE:
**1/2" (DN 15) FLANGED
ECD VALVE**

DWG TYPE:

PLANAR VIEW 2-D

PROJECT: A-SERIES ECD SHT: 1 OF 1 DRAWN BY: VICTOR W.

DATE ISSUED: 23-AUG-10 SCALE: 1:2 UNITS: INCHES

DWG NO: ECD-50E-SS-T-2D

MATERIAL: METALLIC DIMENSIONAL TOLERANCE: XXX ± 0.25"

APPROVED BY: THIRD ANGLE PROJECTION



REV.#: 1 SHEET SIZE: 8.5 X 11

A