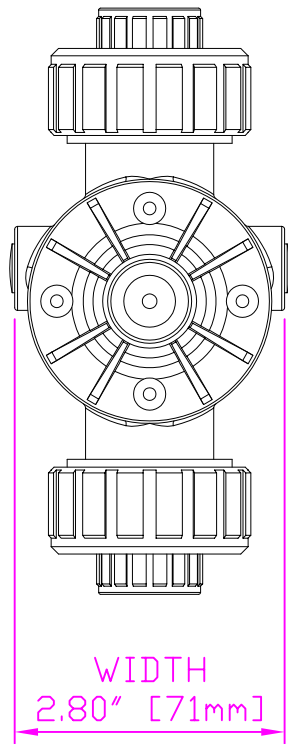
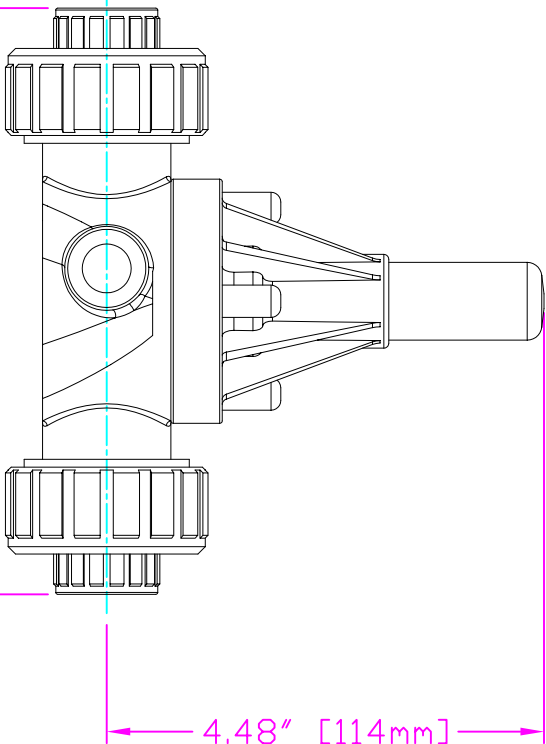


THIS DRAWING IS THE PROPERTY OF PRIMARY FLUID SYSTEMS INC. FROM WHICH A WRITTEN CONSENT FOR APPROVAL SHALL BE REQUIRED PRIOR TO COPYING.

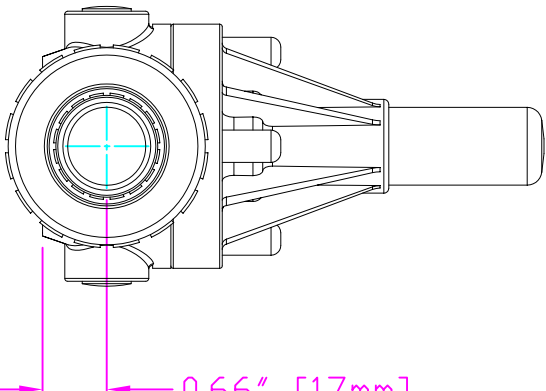
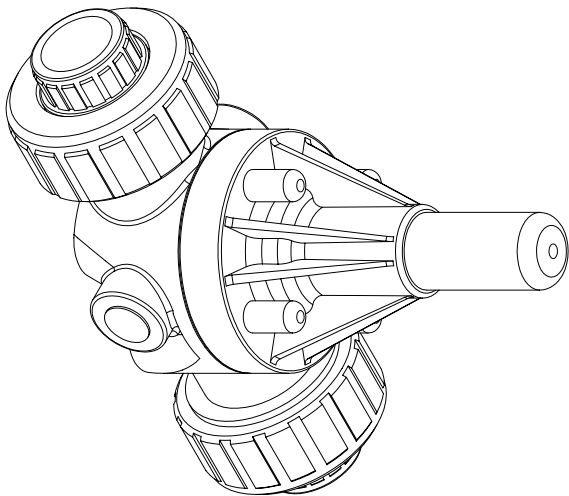


WIDTH  
2.80" [71mm]



6.00" [152mm]  
LENGTH (L)

4.48" [114mm]  
HEIGHT (H)



0.66" [17mm]  
HEIGHT (h)

- ECD-501-PVC-P
- ECD-501-CPVC-T
- ECD-501-PP-T
- ECD-501-PVDF-T
- ECD-50J-PVC-P
- ECD-50J-CPVC-T
- ECD-50J-PP-T
- ECD-50J-PVDF-T

THIS DRAWING WITH DIMENSIONS  
APPLY TO FOLLOWING MODELS:

**PRIMARY FLUID SYSTEMS INC.**

1050 Cooke Blvd., Burlington, Ontario L7T 4A8

UNION X 1/2" (DN 15) SOCKETED  
ECD VALVE

PROJECT: A-SERIES ECD  
DATE ISSUED: 29-JUL-10  
SCALE: 1:2  
UNITS: INCHES  
DRAWN BY: VICTOR W.L.  
SHEET: 1

DWG NO: ECD-501-PVC-P-2D

MATERIAL: POLY  
APPROVED BY: [Signature]

DWG TYPE:

PLANAR VIEW 2-D



FIRST ANGLE PROJECTION

DIMENSIONAL TOLERANCE:  
XXX = ± 0.25"

8.5 X 11  
SHEET  
SIZE:  
**A**