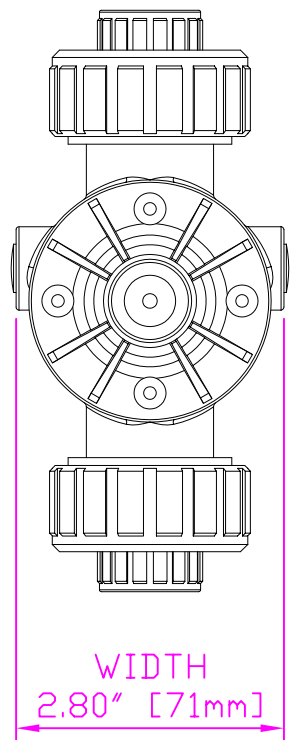
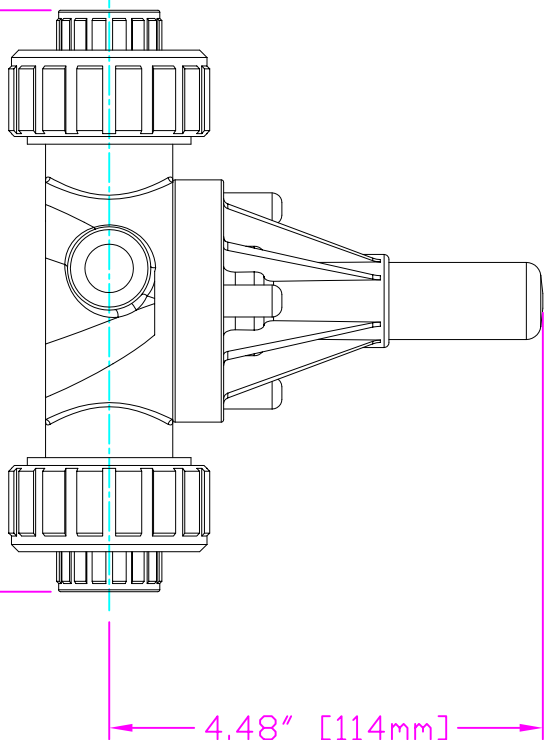


THIS DRAWING IS THE PROPERTY OF PRIMARY FLUID SYSTEMS INC. FROM WHICH A WRITTEN CONSENT FOR APPROVAL SHALL BE REQUIRED PRIOR TO COPYING.

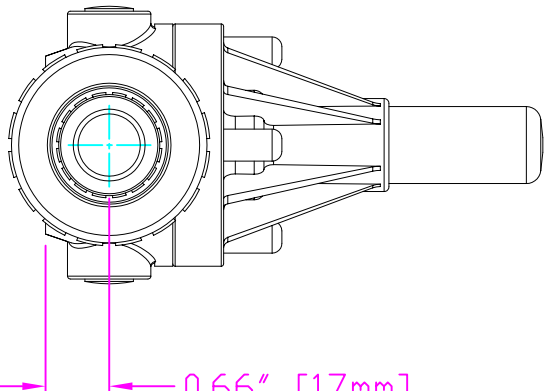
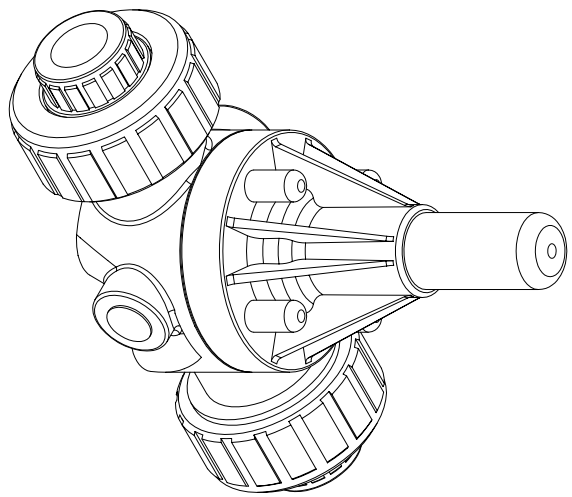


WIDTH
2.80" [71mm]



4.48" [114mm]
HEIGHT (H)

6.00" [152mm]
LENGTH (L)



0.66" [17mm]
HEIGHT (h)

- ECD-381-PVC-P
- ECD-381-CPVC-T
- ECD-381-PP-T
- ECD-381-PVDF-T
- ECD-38J-PVC-P
- ECD-38J-CPVC-T
- ECD-38J-PP-T
- ECD-38J-PVDF-T

THIS DRAWING WITH DIMENSIONS
APPLY TO FOLLOWING MODELS:

PRIMARY FLUID SYSTEMS INC.

1050 Cooke Blvd., Burlington, Ontario L7T 4A8

UNION X 3/8" (DN 10) SOCKETED
ECD VALVE

PROJECT: A-SERIES ECD	SHT. 1 OF 1	DRAWN BY: VICTOR V.L.
DATE ISSUED: 26-JUL-10	SCALE: 1:2	UNITS: INCHES
DWG NO.: ECD-381-PVC-P-2D		
MATERIAL: PDL Y		

APPROVED BY:		
THIRD ANGLE PROJECTION		
DIMENSIONAL TOLERANCE XXX = ± 0.25"		
REV# 1		
SHEET 8.5 X 11		
SIZE: A		

DWG TYPE: PLANAR VIEW 2-D