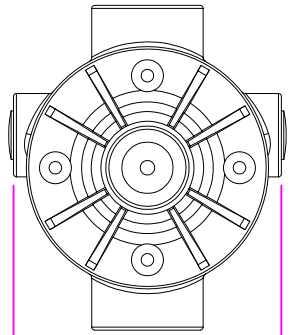
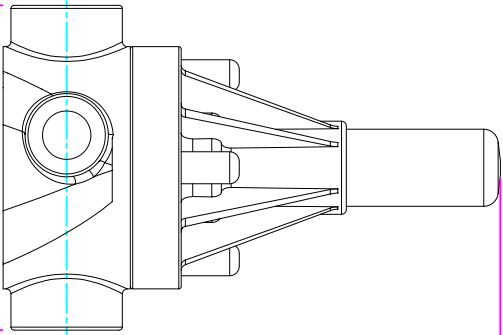


THIS DRAWING IS THE PROPERTY OF PRIMARY FLUID SYSTEMS INC. FROM WHICH A WRITTEN CONSENT FOR APPROVAL SHALL BE REQUIRED PRIOR TO COPYING.

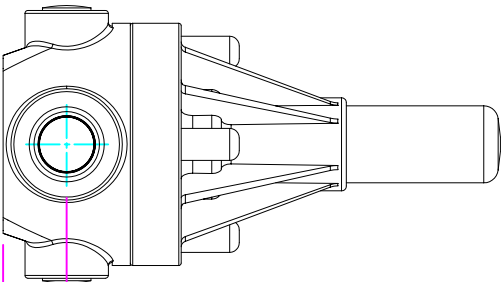
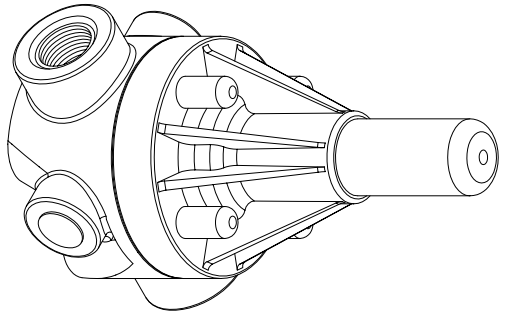


WIDTH
2.80" [71mm]



LENGTH (L)
3.40" [86mm]

4.48" [114mm]
HEIGHT (H)



0.66" [17mm]
HEIGHT (h)

PRIMARY FLUID SYSTEMS INC.

1050 Cooke Blvd, Burlington, Ontario L7T 4A8

ECD VALVE
WITH 3/8" BSPT FEMALE

DWG NAME: 0.375" BSPT FEMALE

DWG TYPE: PLANAR VIEW 2-D

PROJECT: A-SERIES ECD SHT: 1 OF 1 DRAWN BY: VICTOR V.

DATE ISSUED: 23-JUL-10 SCALE: 1:2 UNITS: INCHES

ECD-38B-PVC-P-2D

MATERIAL: POLY

APPROVED BY:



DIMENSIONAL TOLERANCE
XXX = ± 0.25"

REV.#: 0

SHEET: 05 X 11
SIZE: A