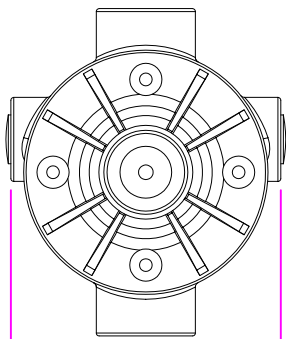
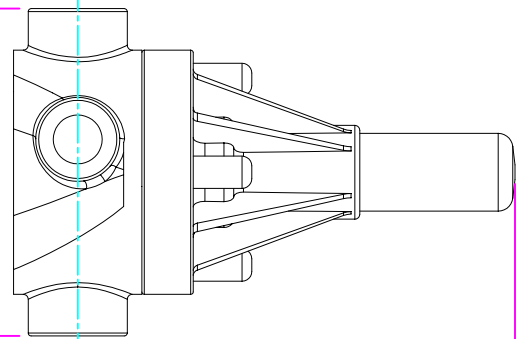


THIS DRAWING IS THE PROPERTY OF PRIMARY FLUID SYSTEMS INC. FROM WHICH A WRITTEN CONSENT FOR APPROVAL SHALL BE REQUIRED PRIOR TO COPYING.

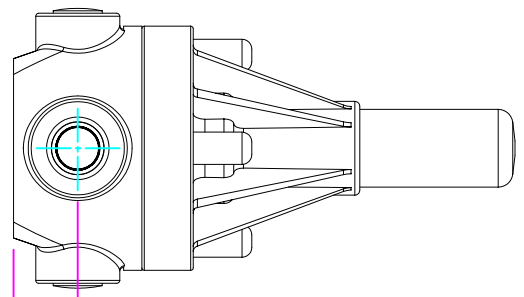
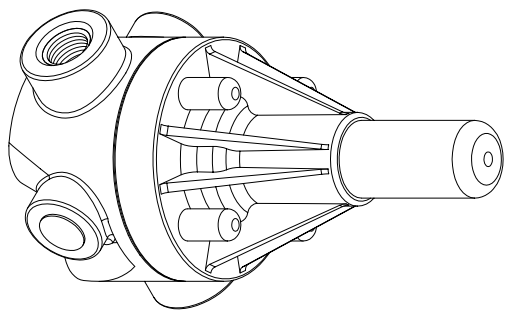


WIDTH  
2.80" [71mm]



LENGTH (L)  
3.40" [86mm]

4.48" [114mm]  
HEIGHT (H)



0.66" [17mm]  
HEIGHT (h)

- APPLY TO FOLLOWING MODELS:
- ECD-25A-PVC-P
  - ECD-25A-CPVC-T
  - ECD-25A-PP-T
  - ECD-25A-PVDF-T
  - ECD-25B-PVC-P
  - ECD-25B-CPVC-T
  - ECD-25B-PP-T
  - ECD-25B-PVDF-T

**PRIMARY FLUID SYSTEMS INC.**

1050 Cooke Blvd., Burlington, Ontario L7T 4A8

TITLE  
**1/2" THREADED  
ECD VALVE**

DWG TYPE: PLANAR VIEW 2-D

PROJECT A-SERIES ECD SHIT 1 OF 1 DRAWN BY: VICTOR W.L.

DATE ISSUED: 22-JUL-10 SCALE: 1:2 UNITS: INCHES

DWG NO: ECD-25A-PVC-P-2D

MATERIAL: POLY

APPROVED BY:  DIMENSIONAL TOLERANCE: XXX = ± 0.25"

REV# 1 SHEET SIZE: 8.5 X 11

**A**