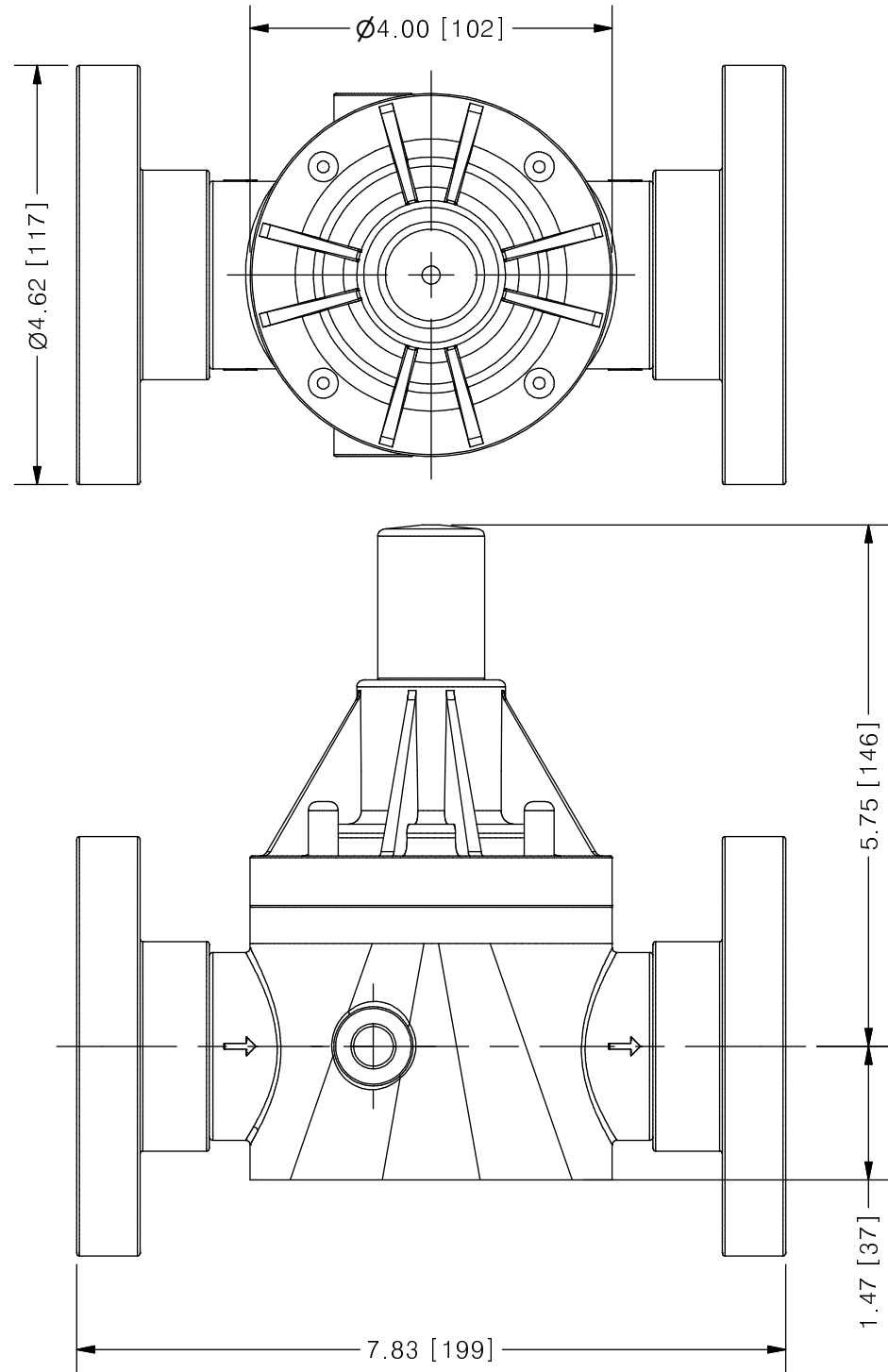
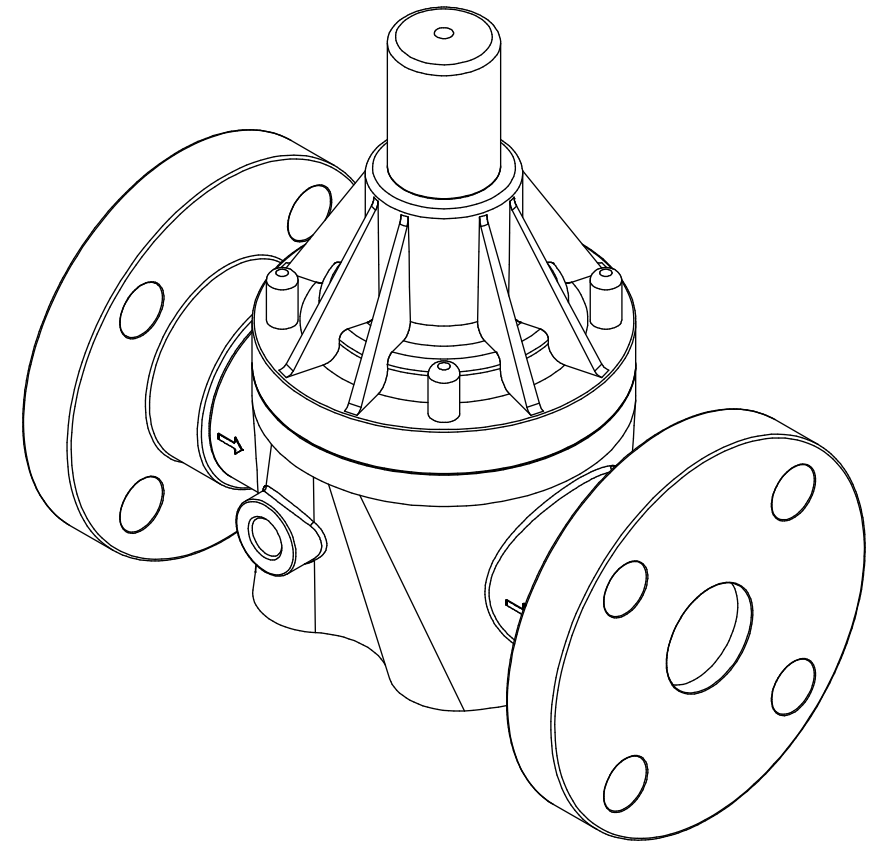


THIS DRAWING IS THE PROPERTY OF PRIMARY FLUID SYSTEMS INC. FROM WHICH A WRITTEN CONSENT FOR APPROVAL SHALL BE REQUIRED PRIOR TO COPYING.

| NO. | NAME | DESCRIPTION |
|------------------------|-------------------------------------|---|
| 1 | MAX ALLOWABLE OPERATING TEMPERATURE | 180°F (82°C) / 140°F (60°C) FOR PVC BODY |
| 2 | MAX ALLOWABLE OPERATING PRESSURE | 150 PSIG @ 70°F |
| CONNECTIONS | | |
| 3 | SIZE: INLET/OUTLET | 1-1/4" |
| 4 | CONNECTION TYPE | ANSI FLANGE 150# FF B16.5 |
| MATERIALS (WETTED) | | |
| 6 | BODY | PVC (CPVC, PP AND PVDF OPTIONAL) |
| 7 | DIAPHRAGM | PTFE BACKED EPDM (PVC, EPDM AND VITON OPTIONAL) |
| MATERIALS (NON-WETTED) | | |
| 8 | SPRING BONNET/TOP | CPVC |
| 9 | SPRING | NICKEL PLATED MUSIC WIRE ASTM A228 |
| 10 | TOP/BOTTOM DISC | POLYPROPYLENE |
| 11 | BOLTS, NUTS, WASHERS | 18.8 SS, ANSI B18.3 |
| 12 | FACTORY SET PRESSURE | 50 PSIG |
| 13 | SPRING RANGE | 7-150 PSIG |



ECO VALVE® C-SERIES BACK PRESSURE VALVE



SCALE 1 : 2

| | | | | |
|---|-----------------------|---|--------------|------------------------|
| PRIMARY FLUID SYSTEMS INC. 1050 COOKE BLVD, BURLINGTON, ONTARIO L7T 4A8 | | PROJECT: EV C-SERIES | SHT: 1 OF 1 | DRAWN BY: BRJB |
| TITLE: BACK PRESSURE ECO VALVE C-SERIES WITH 1-1/4" ANSI FLANGES | | DATE DRAWN: 6/2/2017 | SCALE: 1 : 2 | UNITS: INCH [mm] |
| DWG NO: ECO-125E-PVC_R0 | MATERIAL: SEE CHART | REV# 0 | | |
| DWG NAME: ECO VALVE | DWG TYPE: PLANAR VIEW | APPROVED BY: | CHECKED BY: | THIRD ANGLE PROJECTION |
| REVISION HISTORY | | DIMENSIONAL TOLERANCE 0.X = ± 0.25" 0.XX = ± 0.25" 0.XXX = ± 0.25" | | |

| REV | DESCRIPTION | DATE | NAME |
|-----|-------------|------|------|
| 0 | NEW DRAWING | -- | -- |