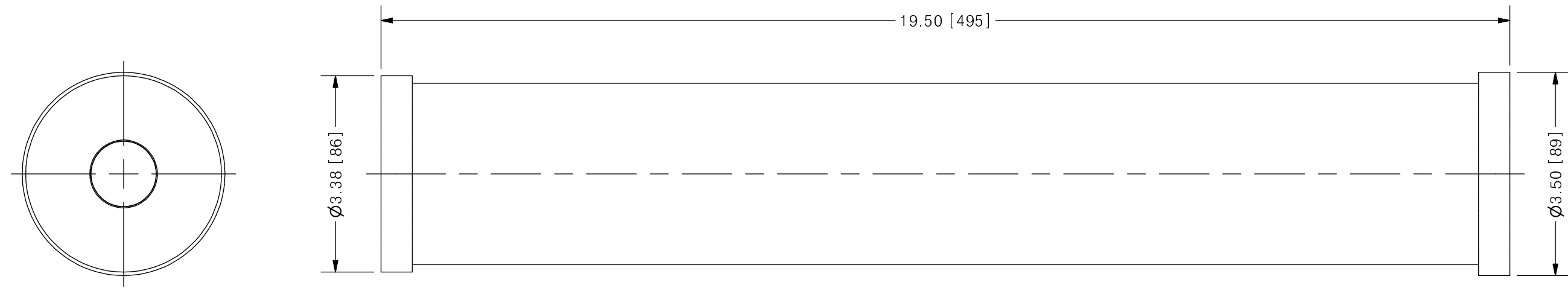


THIS DRAWING IS THE PROPERTY OF PRIMARY FLUID SYSTEMS INC. FROM WHICH A WRITTEN CONSENT FOR APPROVAL SHALL BE REQUIRED PRIOR TO COPYING.

NO.	NAME	DESCRIPTION
1	MAX ALLOWABLE OPERATING TEMPERATURE	140°F (60°C)
2	MAX ALLOWABLE OPERATING PRESSURE	15 PSIG
3	LEAK TEST	YES
CONNECTIONS	4 BOTTOM PORT CONNECTION	1"
5	TOP PORT CONNECTION	1"
6	TYPE	NPT
MATERIALS	7 CYLINDER	POLYPROPYLENE
8	END CAPS	POLYPROPYLENE
INPUT DATA	12 VOLUME SIZE	2000 ML
SCALE	13 GRADUATION	20 ML
COMMENTS	15 ALL CYLINDERS ARE RATED FOR LIQUID SERVICE ONLY	✓
16	CYLINDERS ARE NOT PRESSURE VESSELS	✓

CLEARVIEW® PP#2 POLYPROPYLENE CALIBRATION CYLINDER



SCALE 1 : 2

REV	DESCRIPTION	DATE	NAME
0	NEW DRAWING	--	--

REVISION HISTORY

PRIMARY FLUID SYSTEMS INC. 1050 COOKE BLVD, BURLINGTON, ONTARIO L7T 4A8		PROJECT: PP	SHT: 1 OF 1	DRAWN BY: NG
TITLE: 2000 ML CALIBRATION CYLINDER WITH 1" NPT CONNECTIONS		DATE DRAWN: 5/25/2016	SCALE: 1 : 2	UNITS: INCH [mm]
DWG NAME: PP CYLINDER DWG TYPE: PLANAR VIEW		MATERIAL: SEE CHART	DWG NO: PP#2-2000_R0	REV# 0
APPROVED BY: _____ CHECKED BY: _____		DIMENSIONAL TOLERANCE 0.XX = ± 0.25" 0.XXX = ± 0.25" 0.XXXX = ± 0.25"		SHEET SIZE: B