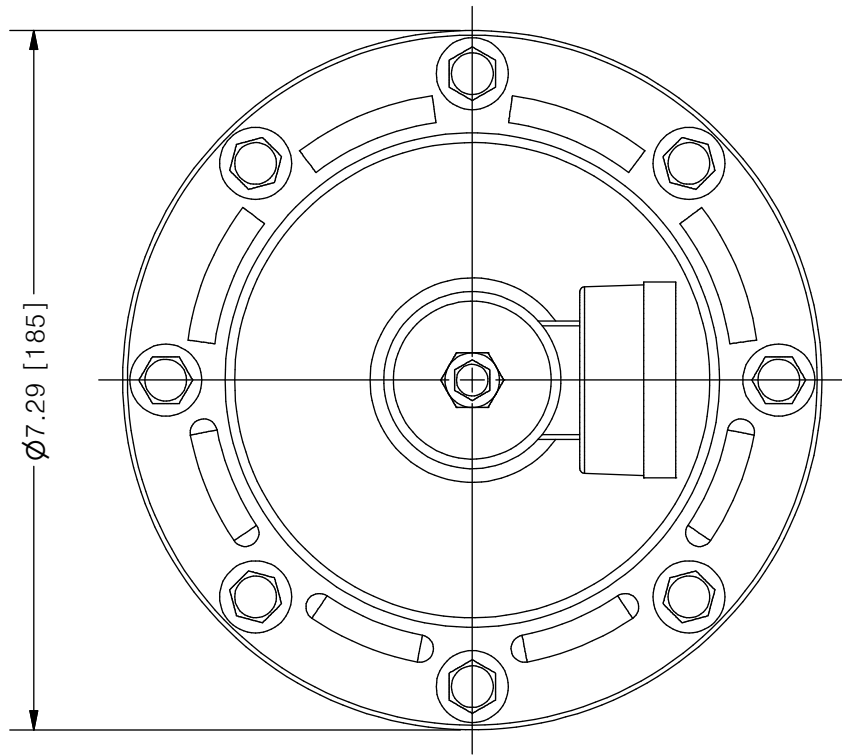
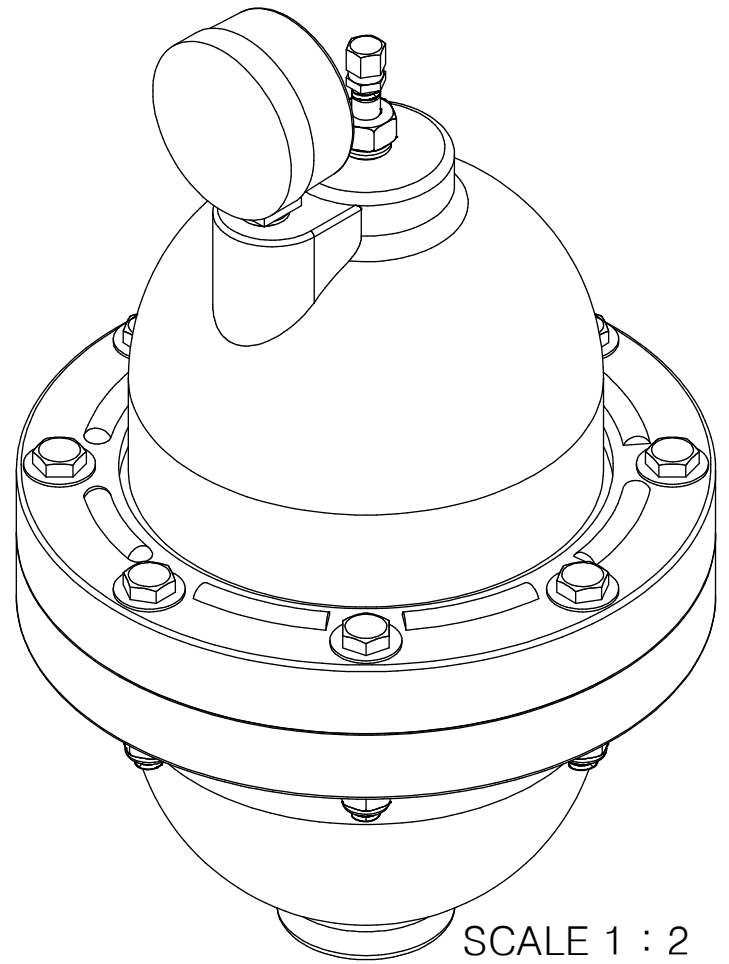


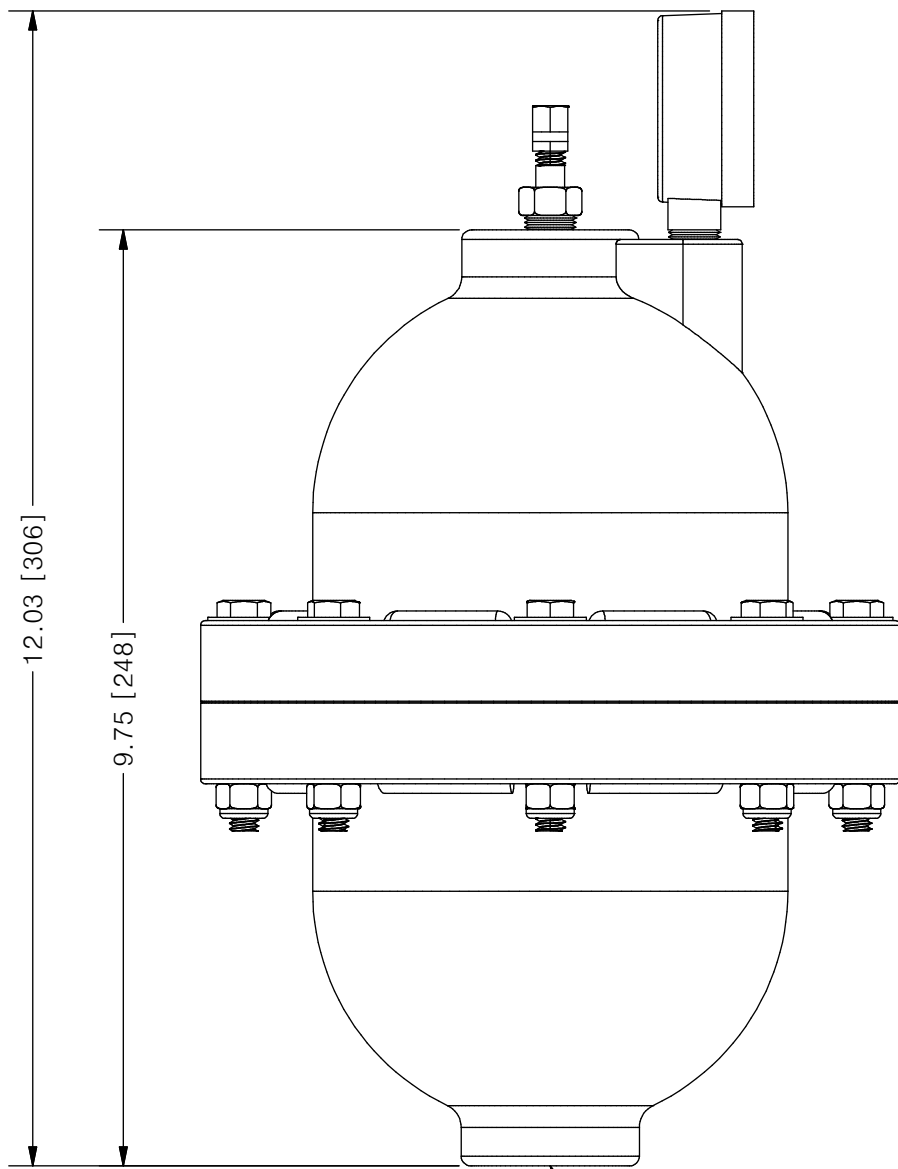
THIS DRAWING IS THE PROPERTY OF PRIMARY FLUID SYSTEMS INC. FROM WHICH A WRITTEN CONSENT FOR APPROVAL SHALL BE REQUIRED PRIOR TO COPYING.



**ACCU-PULSE®**  
APII PULSATION DAMPENER



SCALE 1 : 2



INLET PORT

| AVAILABLE BLADDER/BELLOW |  |
|--------------------------|--|
| EPDM                     |  |
| VITON                    |  |
| NEOPRENE                 |  |
| BUNA-N                   |  |
| HYPALON                  |  |
| PTFE                     |  |

| NO. | NAME                             | DESCRIPTION               |
|-----|----------------------------------|---------------------------|
| 1   | MAX ALLOWABLE OPERATING PRESSURE | 150PSI @ 70°F (21°C)      |
| 2   | UNIT CAPACITY                    | 85 CU IN                  |
| 3   | INLET PORT                       | 3/4" (1" OPTIONAL)        |
| 4   | CONNECTION TYPE                  | NPT                       |
| 5   | BOTTOM HOUSING (WETTED)          | PVC/PP/PVDF/CPVC          |
| 6   | BLADDER (WETTED)                 | SEE CHART ABOVE           |
| 7   | TOP HOUSING                      | PVC/PP                    |
| 8   | GAUGE CASE/BACKING               | PLASTIC AND BRASS         |
| 9   | FILL VALVE                       | BRASS                     |
| 10  | FASTENER ASSEMBLY RING/BOLTS     | NORYL AND STAINLESS STEEL |

|   |                            |                       |                                       |
|---|----------------------------|-----------------------|---------------------------------------|
| <b>PRIMARY FLUID SYSTEMS INC.</b><br>1050 COOKE BLVD, BURLINGTON, ONTARIO L7T 4A8 | PROJECT: AP                | SHT: 1 OF 1           | DRAWN BY: NIKHIL G                    |
|   | DATE DRAWN: 8/15/2016      | SCALE: 1 : 2          | UNITS: INCH[mm]                       |
| TITLE: ACCU-PULSE II PULSATION DAMPENER   | MATERIAL: SEE CHART        | DWG NO.: APII-POLY_RI | REV# 1                                |
| DWG NAME: APII  | APPROVED BY:               | CHECKED BY:           | DIMENSIONAL TOLERANCE<br>0.XX ± 0.25" |
| DWG TYPE: PLANAR VIEW 2D  | THIRD ANGLE PROJECTION<br> |                       |                                       |

11 X 17 SHEET SIZE: **B**