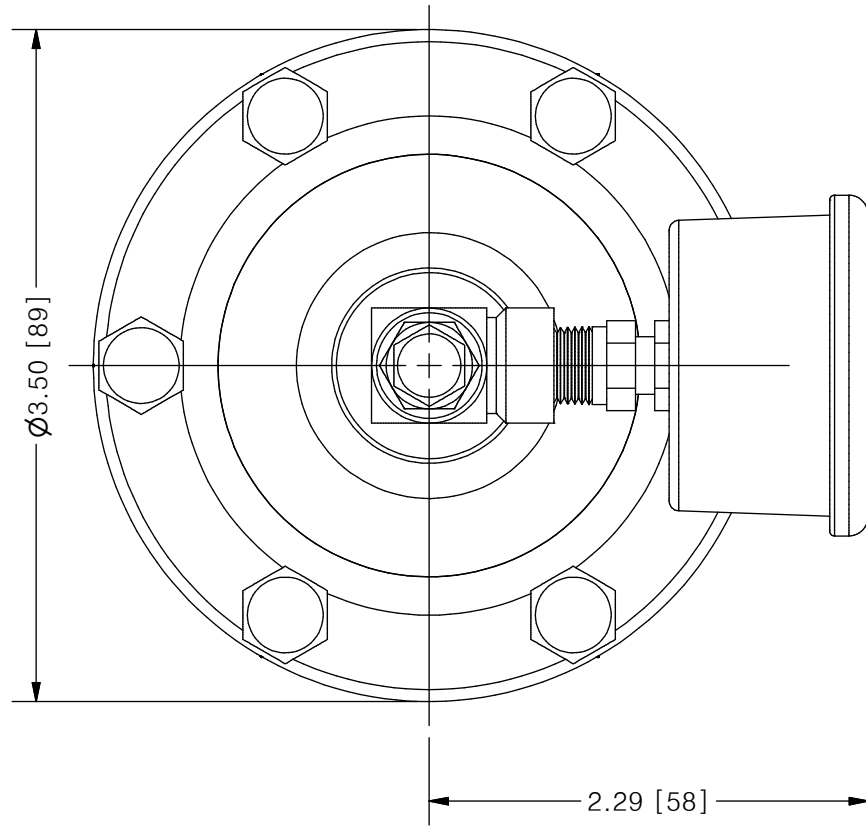
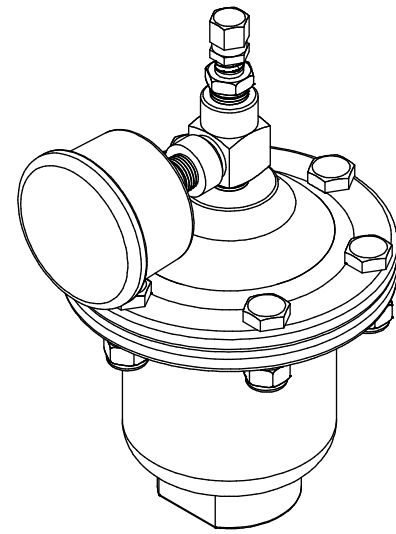


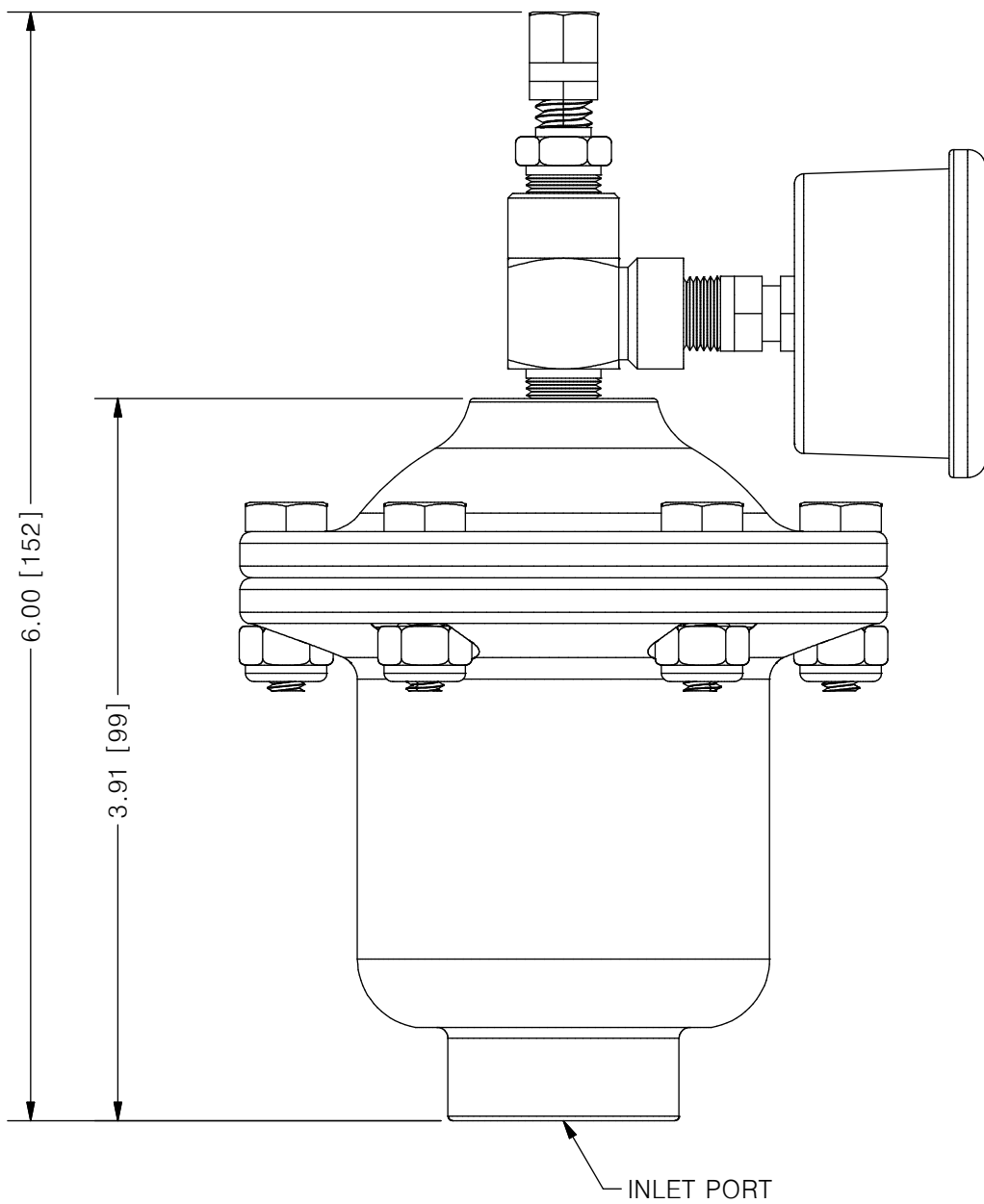
THIS DRAWING IS THE PROPERTY OF PRIMARY FLUID SYSTEMS INC. FROM WHICH A WRITTEN CONSENT FOR APPROVAL SHALL BE REQUIRED PRIOR TO COPYING.



ACCU-PULSE® APIF PULSATION DAMPENER



SCALE 1 : 2



| AVAILABLE BLADDER/BELLOW | |
|--------------------------|--|
| EPDM | |
| VITON | |
| NEOPRENE | |
| BUNA-N | |
| HYPALON | |
| PTFE | |

| NO. | NAME | DESCRIPTION |
|-----|----------------------------------|---------------------------|
| 1 | MAX ALLOWABLE OPERATING PRESSURE | 300PSI @ 70°F (21°C) |
| 2 | UNIT CAPACITY | 4 CU IN |
| 3 | INLET PORT | 3/8" (1/2" OPTIONAL) |
| 4 | CONNECTION TYPE | NPT |
| 5 | BOTTOM HOUSING (WETTED) | 316 S/S / C276 / ALLOY 20 |
| 6 | BLADDER (WETTED) | SEE CHART ABOVE |
| 7 | TOP HOUSING | 316 S/S |
| 8 | GAUGE CASE/BACKING | STAINLESS STEEL AND BRASS |
| 9 | TEE | ZINC PLATED STEEL |
| 10 | FILL VALVE | STAINLESS STEEL |

| | | | |
|---|----------------------------|------------------------|---------------------------------------|
| PRIMARY FLUID SYSTEMS INC. 1050 COOKE BLVD, BURLINGTON, ONTARIO L7T 4A8 | PROJECT: AP | SHT: 1 OF 1 | DRAWN BY: NIKHIL G |
| | DATE DRAWN: 8/15/2016 | SCALE: 1 : 1 | UNITS: INCH[mm] |
| TITLE: ACCU-PULSE IF PULSION DAMPENER | MATERIAL: SEE CHART | DWG NO.: APIF-ALLOY_RI | REV# 1 |
| DWG NAME: APIF | APPROVED BY: | CHECKED BY: | DIMENSIONAL TOLERANCE 0.XX ± 0.25" |
| DWG TYPE: PLANAR VIEW 2D | THIRD ANGLE PROJECTION | | |

11 X 17
SHEET
SIZE:
B