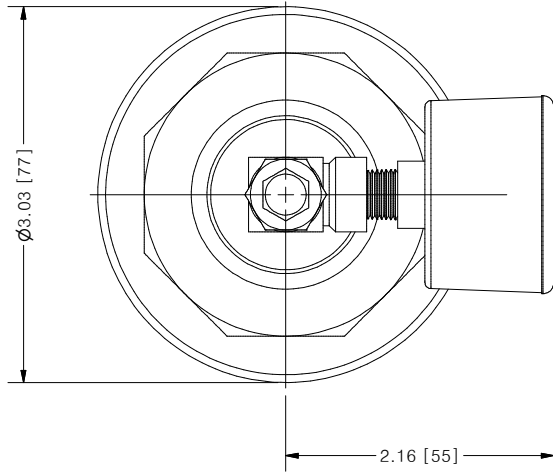
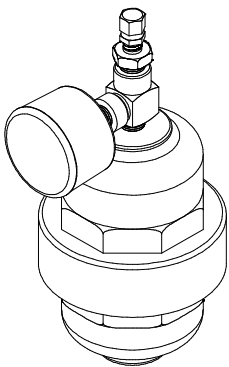
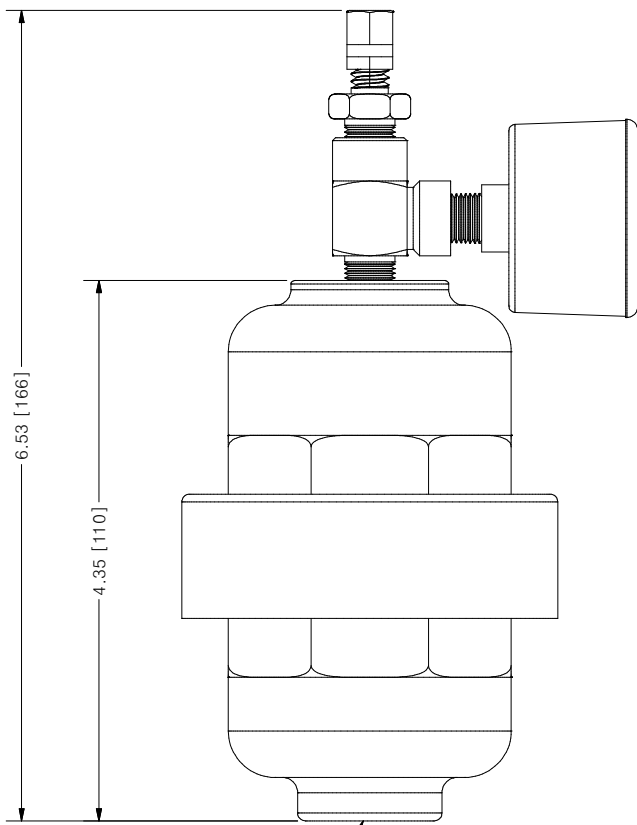


THIS DRAWING IS THE PROPERTY OF PRIMARY FLUID SYSTEMS INC. FROM WHICH A WRITTEN CONSENT FOR APPROVAL SHALL BE REQUIRED PRIOR TO COPYING.



**ACCU-PULSE®**  
API PULSATION DAMPENERS



SCALE 1 : 2

AVAILABLE BLADDER/BELLOW	
EPDM	
VITON	
NEOPRENE	
BUNA-N	
HYPALON	
PTFE	

NO.	NAME	DESCRIPTION
1	MAX ALLOWABLE OPERATING PRESSURE	150PSI @ 70°F (21°C)
2	UNIT CAPACITY	10 CU IN
3	INLET PORT	1/2" (3/8" OPTIONAL)
4	CONNECTION TYPE	NPT
5	BOTTOM HOUSING (WETTED)	PVC/CPVC
6	BLADDER (WETTED)	SEE CHART ABOVE
7	TOP HOUSING	PVC/CPVC
8	GAUGE CASE/BACKING	PLASTIC AND BRASS
9	TEE	ZINC PLATED STEEL
10	FILL VALVE	BRASS

INLET PORT

<b>PRIMARY FLUID SYSTEMS INC.</b> 1050 COOKE BLVD, BURLINGTON, ONTARIO L7T 4A8		PROJECT: AP DATE DRAWN: 8/12/2016	SHT: 1 OF 1 SCALE: 1 : 1 UNITS: Inch/mm	DRAWN BY: NIKHIL G REV# 1
TITLE: ACCU-PULSE I PULSATION DAMPENERS		MATERIAL: SEE CHART DWG NO.: API-POLY_RI		DEPENDENT TOLERANCE 0.005 + 0.020
DWG NAME: API		APPROVED BY:	CHECKED BY:	THIRD ANGLE PROJECTION 
DWG TYPE: PLANAR VIEW 2D		<b>B</b>		